

PREFACE

It gives me great pleasure to present the Twentieth issue of “Accounts at a Glance” of the Ministry of Power for the year 2010-11.

The Ministry of Power is primarily responsible for the development of Electrical Energy in the country. The Ministry is concerned with Perspective Planning, Policy formulation, Processing of projects for investment decisions, Monitoring of the implementation of power projects, Training & manpower development and the Administration and enactment of legislation in regard to thermal, hydro power generation, and transmission & distribution. We have endeavored to present the information in a logical, cohesive and analytical way through flow charts, diagrams, graphs etc. The finance & accounts data has been presented in a lucid and meaningful way to make the document user friendly.

I hope that this document will prove to be informative and used as a reference document. Suggestions are welcome to enable us to improve the future issues.

Jan. 2012
New Delhi

(Sanjai Singh)
Controller of Accounts
Ministry of Power

CONTENTS

<u>Chapter</u>	<u>Subject</u>	<u>Pages</u>
1	Introduction	3 to 5
2	Accounting Organization	6 to 12
3	Accounts Highlights of the Ministry	13 to 19
4	Receipts Analysis	20 to 26
5	Expenditure Analysis	27 to 46
6	Other Areas (Investments & Loans)	47 to 59
7	Internal Audit	61 to 62

INTRODUCTION

The Ministry of Power started functioning independently with effect from 2nd July, 1992. Earlier it was known as the Ministry of Energy comprising the Departments of Power, Coal and Non-Conventional Energy Sources. Electricity is a concurrent subject at entry number 38 in the List III of the Seventh Schedule of the Constitution of India.

The Ministry of Power is mainly responsible for evolving general policy in the field of energy. The main items of work dealt with by the Ministry of Power are as given below:

- General Policy in the electric power sector and issues relating to energy policy and coordination thereof (Details of short, medium and long term policies in terms of formulation, acceptance, implementation and review of such policies, cutting across sectors, fuels, regions and intra-country and inter-country flows).
- All matters relating to hydro-electric power (except small/mini/micro hydel projects of and below 25 MW capacities) and thermal power and transmission & distribution system network.
- Research, development and technical assistance relating to hydro-electric and thermal power transmission system network and distribution systems in the States/UTs.
- Administration of Electricity Act, 2003 (36 of 2003), the Energy Conservation Act, 2001(52 of 2001), the Damodar Valley Corporation Act, 1948 (14 of 1948) and Bhakra Beas Management Board as provided in the Punjab Reorganisation Act, 1966 (31 of 1966).
- All matters relating to Central Electricity Authority, Central Electricity Board and Central Electricity Regulatory Commission.
- Rural Electrification.
- Power schemes and issues relating to Power supply/ development schemes/programmes /decentralized and distributed generation in the States and Union Territories.
- Matters relating to the following Undertakings / Organizations:
 - a. Damodar Valley Corporation
 - b. Bhakhra Beas Management Board (except matters relating to irrigation)
 - c. NTPC Limited.
 - d. National Hydroelectric Power Corporation Limited
 - e. Rural Electrification Corporation Limited
 - f. North Eastern Electric Power Corporation Limited
 - g. Power Grid Corporation of India Limited
 - h. Power Finance Corporation Limited
 - l. Tehri Hydro Development Corporation

- j. Satluj Jal Vidyut Nigam Limited
- k. Central Power Research Institute
- l. National Power Training Institute
- m. Bureau of Energy Efficiency

- All matters concerning energy conservation and energy efficiency pertaining to Power Sector.

These are the main wings of the Ministry:-

1. Investment Promotion Cell
2. Finance
3. Thermal
4. Systems and Administration, Coordination and Energy Management
5. Planning and External Assistance
6. Hydel.

Each wing is headed by a Joint Secretary/ Additional Secretary.

The Ministry also provides assistance to Rural Electrification, State Electricity Boards, Central Sector Power Projects, Power Development in Union Territories, Inter-State Transmission Lines and is also concerned with matters relating to Public Sector Enterprises and Autonomous Bodies under its administrative control.

ATTACHED OFFICE:

CENTRAL ELECTRICITY AUTHORITY

CEA advises the Ministry of Power on technical & economic matters, Central Electricity Authority has been constituted under Section 3(1) of the Electricity (Supply) Act, 1948 which has since been substituted by part IX of the electricity act, 2003.

SUBORDINATE OFFICE:

BADARPUR MANAGEMENT CONTRACT CELL (WOUND UP ON 31.12.2006)

PUBLIC SECTOR UNDERTAKINGS:

- (a) National Thermal Power Corporation, New Delhi.
- (b) National Hydro-Electric Power Corporation, New Delhi
- (c) North Eastern Electric Power Corporation, New Delhi
- (d) Power Grid Corporation of India Limited, New Delhi
- (e) Power Finance Corporation, New Delhi
- (f) Rural Electrification Corporation, New Delhi

JOINT VENTURE CORPORATION:

- (a) Satluj Jal Vidyut Nigam Ltd (formerly Nathpa Jhakri Power Corporation), New Delhi
- (b) Tehri Hydro Development Corporation, New Delhi

STATUTORY BODIES (COMMERCIAL):

- (a) Damodar Valley Corporation, Kolkata
- (b) Bhakra Beas Management Board, Chandigarh

STATUTORY BODIES (NON-COMMERCIAL):

- (a) Central Electricity Regulatory Commission (CERC), New Delhi
- (b) Appellate Tribunal for Energy (ATE), New Delhi
- (c) Bureau of Energy Efficiency (BEE), New Delhi

AUTONOMOUS BODIES:

- (a) Central Power Research Institute (CPRI) Bangalore
- (b) National Power Training Institute (NPTI) Faridabad (Haryana)

Major Schemes under the administrative control of Ministry of Power

- (a) Restructured Accelerated Power Development and Reform Programme (R-APDRP)
- (a) Restructured Accelerated Power Development and Reform Programme (R-APDRP)
- (b) Rajiv Gandhi Grameen Vidyutikaran Yojna. (RGGVY)

ACCOUNTING ORGANISATION

Secretary (Power) is the Chief Accounting Authority of Ministry of Power and Controller of Accounts is the head of Accounting Organisation of MOP. The Organisation Chart of the Accounting set up is shown in Chart 2.1.

The main responsibilities of Controller of Accounts, MOP are:

- I The accounting information generated in the various Pay and Accounts Offices is consolidated in the Principal Accounts Office for each month and then submitted to Controller General of Accounts (CGA), Department of Expenditure, Ministry of Finance.
- II Payment functions through the Pay and Account Offices and Cheque Drawing DDOs located at various places.
- III Preparation of Annual Headwise Appropriation Accounts and Statement of Central Transactions for the Ministry.
- IV All banking arrangement with Receipts and Payment functions related to the Ministry.
- V Training of officials to enhance their skills and knowledge particularly in accounts, budget, internal audit and information technology.
- VI Conducting Internal Audit of various offices / organizations of Ministry of Power.
- VII With the thrust towards computerization in every sphere of life, the office of the Controller of Accounts is utilizing the software COMPACT (PAO2000) and CONTACT for various level computerizations for consolidating monthly accounts and generating various statements. It is done at two levels:-
 1. PAOs level – COMPACT(PAO2000)
 2. Principal Accounts Office level – CONTACT.

The CONTACT software is also generating certain reports such as: - consolidation of PAO's account, Grant wise reports, Major Head wise reports, Revenue receipts, PAO wise consolidation reports.

E-Lekha

E- lekha is an e-governance initiative by the CGA. Under this all PAOs are uploading the daily abstract of accounts on the e-lekha website on day-to- day basis. The expenditure and receipt of the ministry can be viewed from the Link e-Lekha on the website cga.nic.in.

The following reports are prepared in Principal Accounts Office on the basis of Data submitted by the PAOs:-

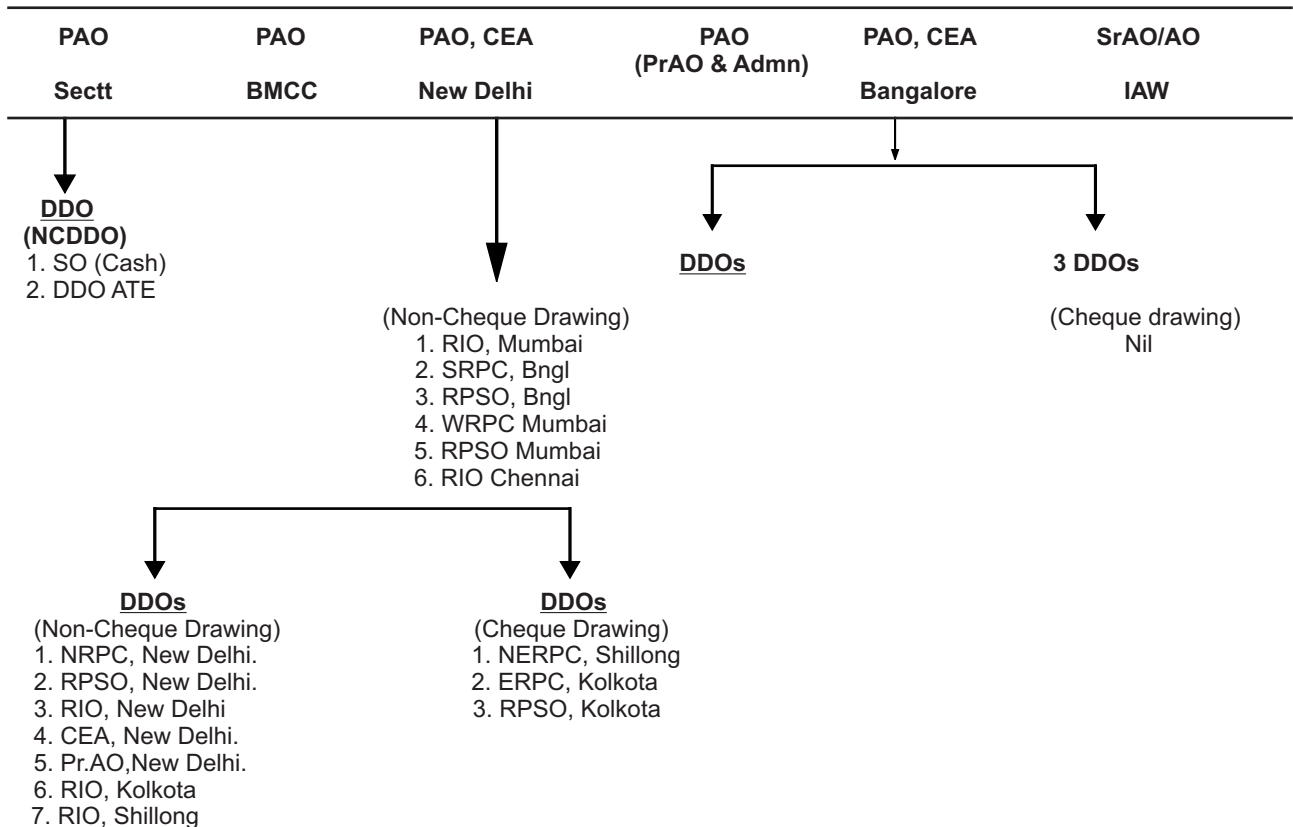
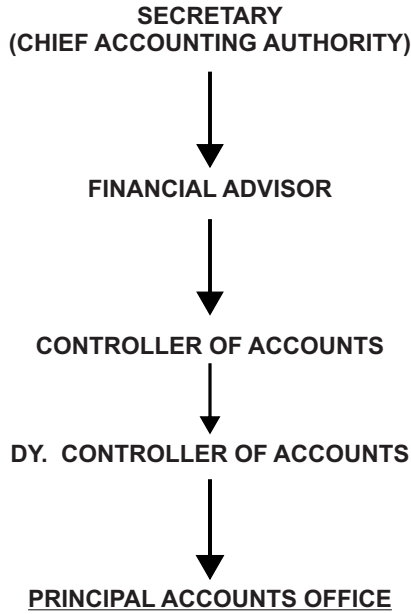
- (I) Appropriation Accounts
- (ii) Finance Accounts
- (iii) Appropriation Audit Register
- (iv) Put Through and PSBS Report
- (v) DDR Ledger Head
- (vi) IEBR (Internal External Budgetary Resources)
- (vii) Net Expenditure report
- (viii) Expenditure Reports pertaining to Income Tax, Interest, Pension, Loan, CGEGIS etc.
- (ix) Quarterly reports of Pay & allowances of all PAOs employees.
- (x) SCT (Statement of Central Transactions)
- (xi) Progressive expenditure report.
- (xii) DDO wise Head of Account wise Budget monitoring (In PAOs)
- (xiii) Release of loans, repayment & interest payment.

Defined Contribution Pension Scheme

A New Pension Scheme called Defined Contribution Pension Scheme introduced by the Government of India w.e.f 1.1.2004 has been implemented in the Ministry. All PAOs and CDDOs of the ministry are remitting the subscribers contribution to the trustee bank of NSDL and the subscriber's contribution files are being uploaded on the NSDL website regularly.

Chart 2.1

STRUCTURE OF ACCOUNTING ORGANISATION



Abbreviations Used:-

- | | | |
|---------|-------------------------------------|---|
| 1.CEA | -Central Electricity Authority | 8. NRPC-North Regional Power Committee |
| 2.RIO | -Regional Inspectorial Organization | 9. NERPC-North Eastern Regional Power Committee |
| 3.ATE | -Appellate Tribunal for Electricity | |
| 4.SRPC | -Southern Regional Power Committee | |
| 5.RPSO | -Regional Power Survey Office | |
| 6. WRPC | -Western Regional Power Committee | |
| 7.ERPC | -Eastern Regional Power Committee | |

FLOW OF ACCOUNTING INFORMATION

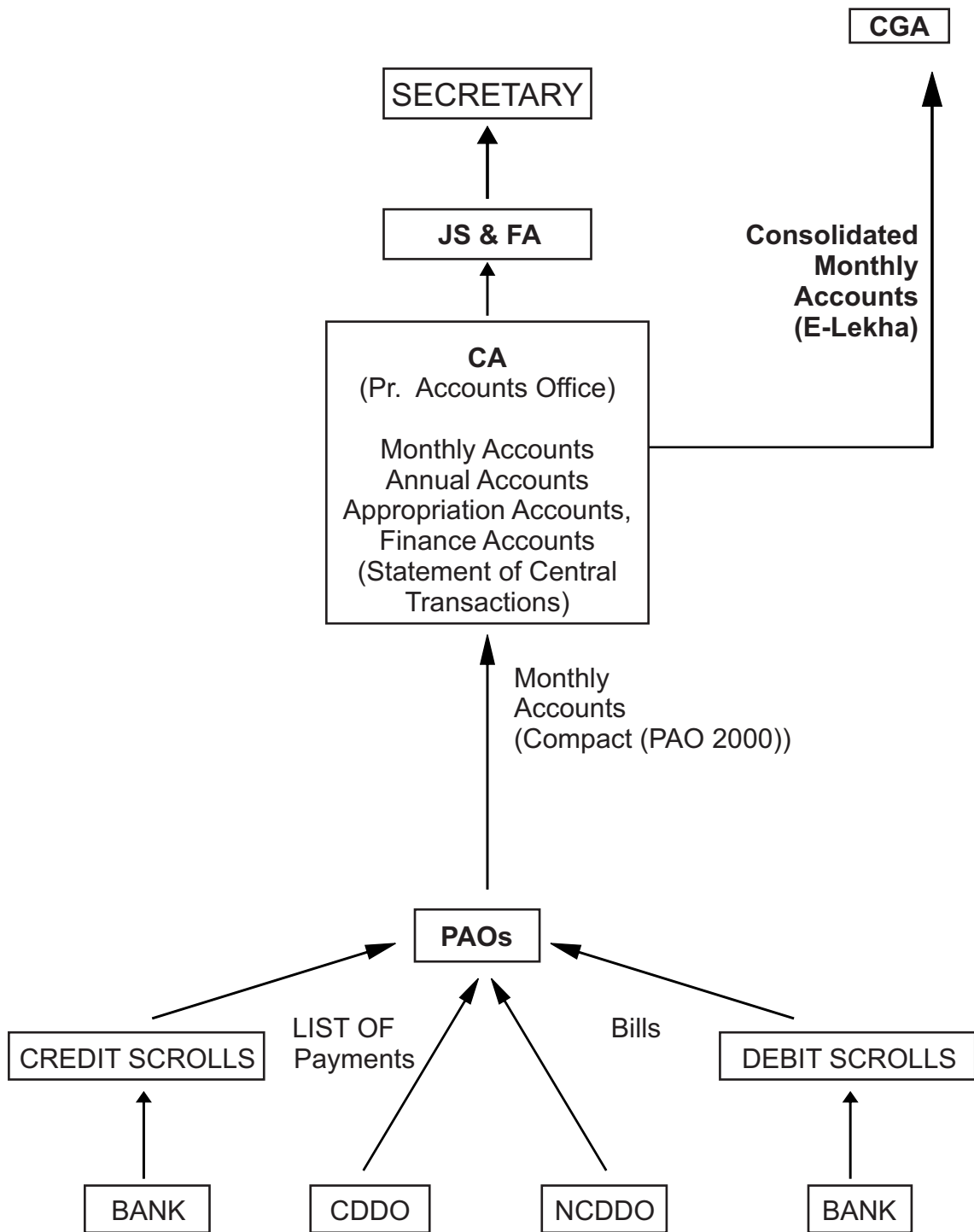


Chart 2.3

HIGHLIGHT OF ACCOUNTS

Govt. Accounts are kept in three parts, viz. Consolidated Fund, Contingency Fund and Public Account. The following is a pictorial representation of the Government Accounts:-

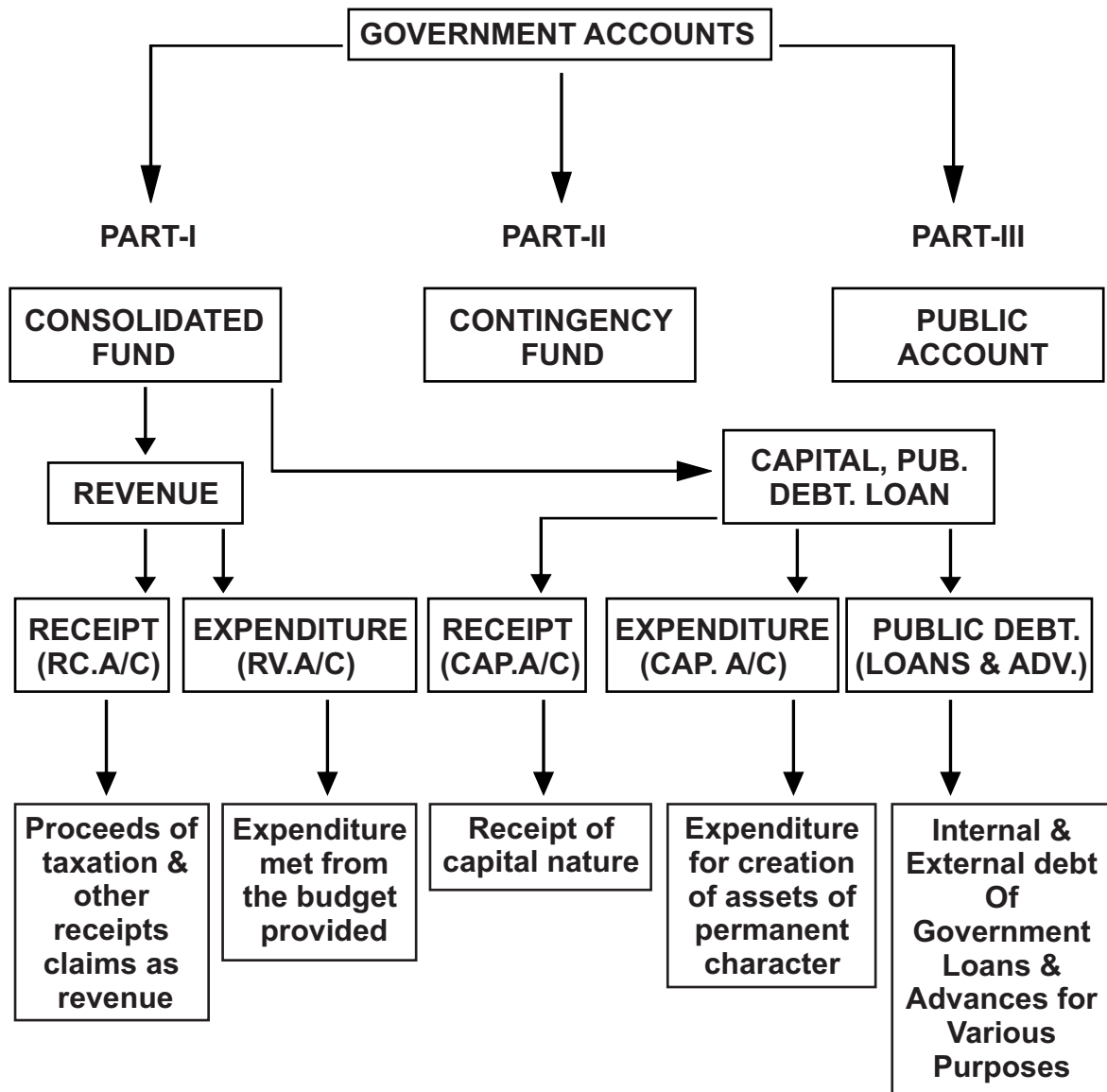


Chart 2.4

ACCOUNTING OPERATIONS – AN OVERVIEW

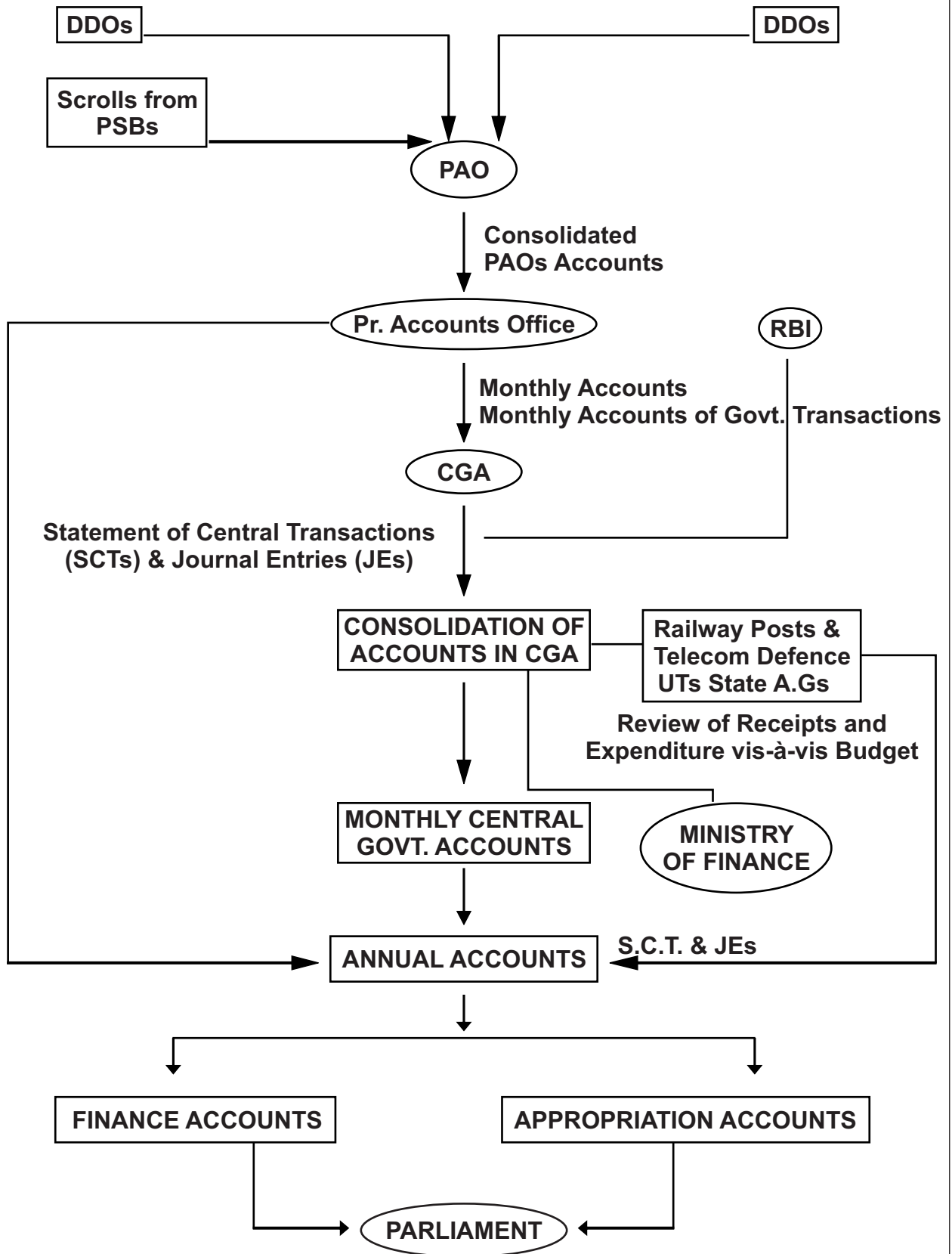
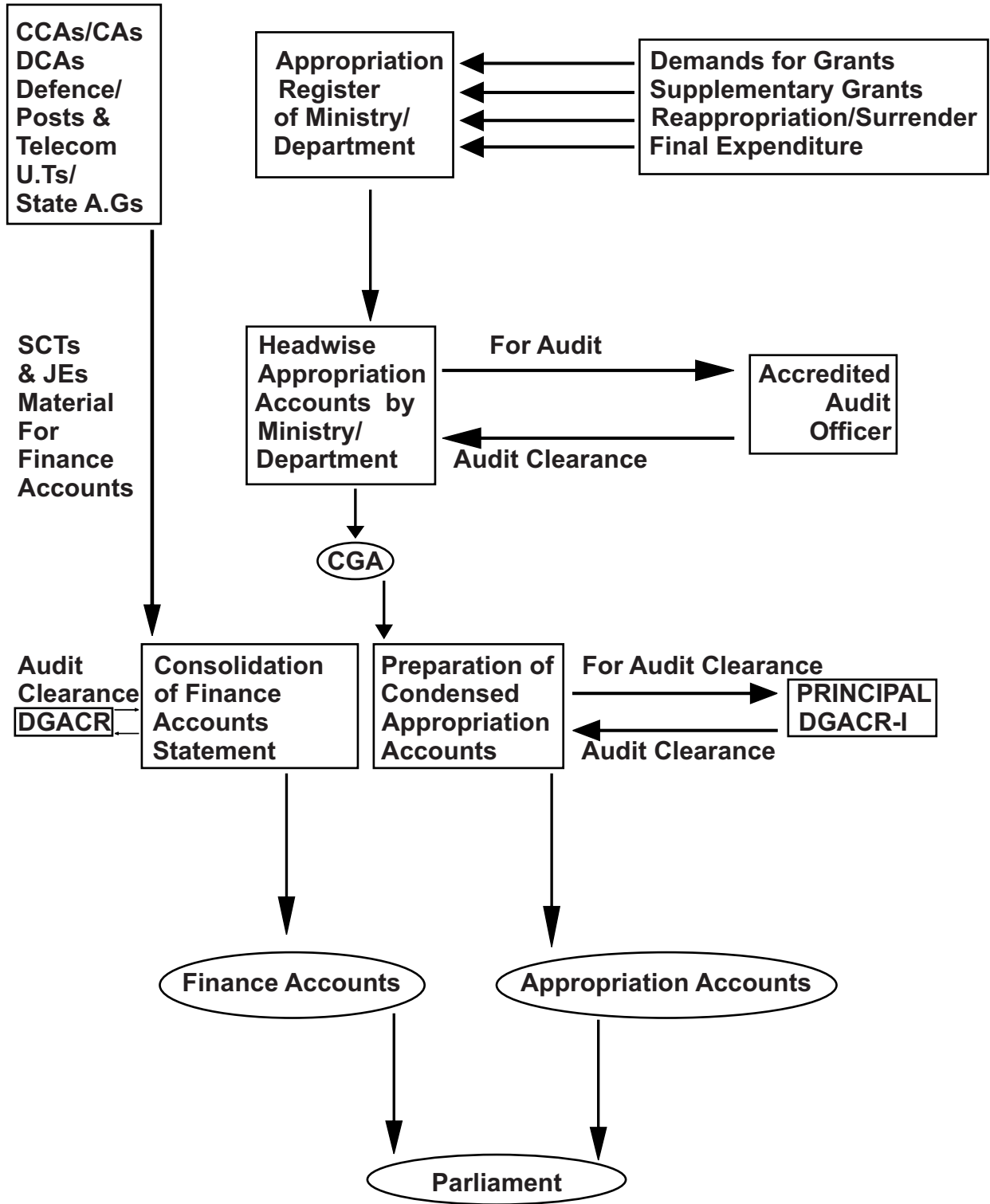


Chart 2.5

PREPARATION OF ANNUAL ACCOUNTS OF THE GOVERNMENT OF INDIA



CHAPTER- 3

ACCOUNTS HIGHLIGHTS
MINISTRY OF POWER
FINANCIAL YEAR 2010-2011

(In Crore of ₹.)

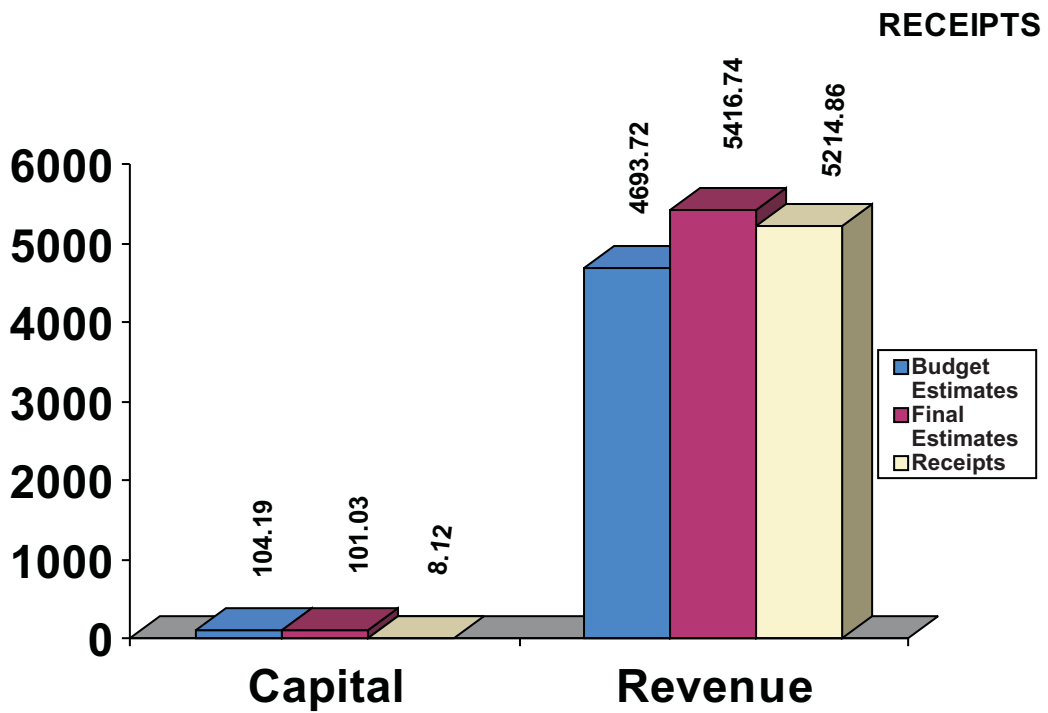
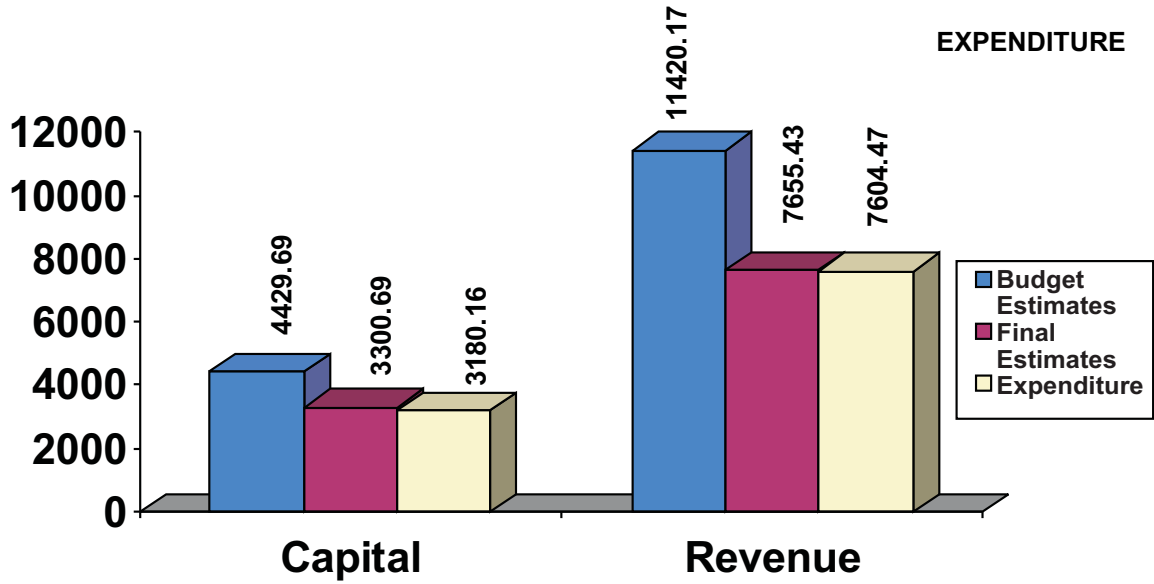
S.No.	ITEM(S)	Budget Estimates BE	Final Estimates FE	Actual	Variation with BE (%)	Variation with FE (%)
1.	RECEIPTS					
	REVENUE RECEIPTS {(i)+(ii)}	4693.72	5416.74	5214.86	11.10	-3.73
	(I) TAX REVENUE	---	---	4.97	---	--
	(ii) NON-TAX REVENUE	4693.72	5416.74	5209.89	11.00	-3.82
2.	CAPITAL RECEIPTS					
	(Recoveries of loans)	104.19	101.03	8.12	-92.21	-91.96
	TOTAL RECEIPTS (1+2)	4797.91	5517.77	5222.98	8.86	-5.34
3.	EXPENDITURE					
	NON-PLAN EXPENDITURE					
	{(i)+(ii)}	167.86	178.91	130.83	-22.06	-26.87
	(i) ON REVNUUE ACCOUNT	167.01	178.06	130.40	-21.92	-26.77
	(ii) ON CAPIATL ACCOUNT	0.85	0.85	0.43	-49.41	-49.41
4.	PLAN EXPENDITURE					
	{(i)+(ii)}	15682.00	10777.21	10653.80	-32.06	-1.15
	(i) ON REVNUUE ACCOUNT	11253.16	7477.37	7474.07	-33.58	-0.04
	(ii) ON CAPIATL ACCOUNT	4428.84	3299.84	3179.73	-28.20	-3.64
	TOTAL EXPENDITURE	15849.86	10956.12	10784.63	-31.96	-1.57
5.	TOTAL EXPENDITURE (3+4)	15849.86	10956.12	10784.63	-31.96	-1.57
	(I) REVENUE EXPENDITURE	11420.17	7655.43	7604.47	-33.41	-0.67
	(ii) CAPITAL EXPENDITURE	4429.69	3300.69	3180.16	-28.21	-3.65

(-) SAVING
(+) EXCESS

Source: SCT and Appropriation Accounts

REVENUE & CAPITAL ACCOUNT
FINANCIAL YEAR 2010-2011

(In Crore of ₹.)



DETAILS OF ACCOUNTS HIGHLIGHTS
FINANCIAL YEAR 2010-2011

(In Crore of ₹.)

S.No.	ITEM(S)	Budget estimates	Final estimates	Actuals
1.	<u>RECEIPTS</u>			
	<u>REVENUE RECEIPTS</u>			
	(A) <u>TAX REVENUE</u>			
	(i) 0021- Tax on Income other than Corp. Tax.	--	---	4.72
	0044- Service Tax	--	----	0.25
	(I) Total – (A)	--	—	4.97
	(B) <u>NON-TAX REVENUE</u>			
	(i) 0049-Interest Receipts	0.54	0.50	9.62
	(ii) 0050- Dividends & Profits	4371.74	5098.86	5026.46
	(iii) 0070- Other Administrative Services	0.00	0.00	0.00
	(iv) 0071- Contribution & Recoveries towards Pension & other Retirement Benefits	0.57	0.57	0.57
	(v) 0075- Miscellaneous General Services	0.52	0.36	0.27
	(vi) 0210- Medical & Public Health	0.18	0.18	0.40
	(vii) 0216- Housing	0.21	0.21	0.17
(viii) 0235-Social Security and Welfare	0.00	0.00	0.00	
(ix) 0801- Power	319.96	316.06	172.40	
Total – (B)	4693.72	5416.74	5209.89	
	Total Revenue Receipts (A) +(B)	4693.72	5416.74	5214.86
2.	<u>CAPITAL RECEIPTS</u>			
	(i) 6801- Repayment of Loans from PSUs	95.41	92.35	0.00
	Repayment of Loans from SEBs	0.50	0.50	0.00
	(ii) 7601-Repayment of Loans from State Govts.	7.00	7.00	7.16
	(iii) 7610-Repayment of Loans from Govt. Servants	1.28	1.18	0.96
	(iv) 7615-Miscellaneous Loans	0.00	0.00	0.00
	Total Capital Receipts (2)	104.19	101.03	8.12
	TOTAL RECEIPTS (1+2)	4797.91	5517.77	5222.98

Contd. On next page

DETAILS OF ACCOUNTS HIGHLIGHTS
FINANCIAL YEAR 2010-2011

(In Crore of ₹.)

S.No.	ITEM(S)	Budget Estimates	Final Estimates	Actual
	<u>EXPENDITURE</u>			
	<u>NON-PLAN EXPENDITURE</u>			
3.	(A) <u>ON REVENUE ACCOUNT</u>			
	(i) 2049- Interest Payment	6.00	6.06	5.78
	(ii) 2071- Pension & Other Retirement Benefits	27.39	25.45	17.21
	(iii) 2075- General Services	--	0.01	0.00
	(iv) 2235- Social Security & Welfare	0.04	0.05	0.05
	(v) 2801- Power	111.79	124.70	86.12
	(vi) 3451- Secretariat – Economic Services	21.79	21.79	21.24
	Total- (A)	167.01	178.06	130.40
	(B) <u>ON CAPITAL ACCOUNT</u>			
	(i) 7610- Loans to Govt. Servants	0.85	0.85	0.43
	Total –(B)	0.85	0.85	0.43
	Total Non-Plan Expenditure (A) + (B)	167.86	178.91	130.83
	<u>PLAN EXPENDITURE</u>			
4.	(A) <u>ON REVENUE ACCOUNT</u>			
	(i) 2552-North Eastern Areas	648.00	570.42	--
	(ii) 2801- Power	10604.16	6905.95	7473.11
	(iii) 3451- Secretariat	1.00	1.00	0.96
	(iv) 3601- Grants-in-aid to State Govts.	---	---	---
	Total – (A)	11253.16	7477.37	7474.07
	(B) <u>ON CAPITAL ACCOUNT</u>			
	(i) 4552- Capital Outlay on North Eastern Areas	45.00	45.00	----
	(ii) 4801- Capital Outlay on Power Projects	2.84	2.84	152.31
	(iii) 6552- Loans for North Eastern Areas	370.00	257.10	---
	(iv) 6801- Loans for Power Projects	4011.00	2994.90	3027.42
	(v) 7601- Loans and Advances to State Govts.	----	----	---
	Total – (B)	4428.84	3299.84	3179.73
	Total Plan Expenditure (A)+(B)	15682.00	10777.21	10653.80
	(i) Revenue Expenditure	11420.17	7655.43	7604.47
	(ii) Capital Expenditure	4429.69	3300.69	3180.16
	TOTAL	15849.86	10956.12	10784.63

Source: Appropriation Account & SCT

**FUND FLOW
MINISTRY OF POWER
FINANCIAL YEAR 2010-2011**

(In Crore of ₹.)

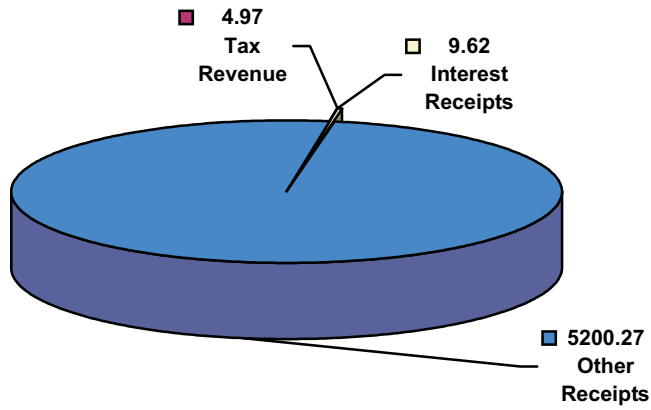
RECEIPTS	AMOUNT	DESBURSEMENT	AMOUNT
<u>CONSOLIDATED FUND OF INDIA</u>		<u>CONSOLIDATED FUND OF INDIA</u>	
<u>A . REVENUE RECEIPTS</u>		<u>REVENUE EXPENDITURE</u>	
1. Tax Revenue	4.97	General Services	22.99
2. Non-Tax Revenue	5209.89	Social Services	0.05
(i) Interest Receipts	9.62	Economic Services	7581.43
(ii) Other Receipts	5200.27	Grants-in-aid	---
Total Revenue Receipts (A)	5214.86	Total Revenue Expenditure	7604.47
<u>B. CAPITAL RECEIPTS</u>		<u>CAPITAL EXPENDITURE</u>	
Loan Recoveries	8.12	General Services	---
		Social Services	---
		Economic Services	152.31
		Loans & Advances	3027.85
Total Capital Receipts (B)	8.12	Total Capital Expenditure	3180.16
Total Consolidated Fund of India (A+B)	5222.98	Total Consolidated Fund of India (A+B)	10784.63
<u>PUBLIC ACCOUNTS</u>		<u>PUBLIC ACCOUNTS</u>	
Provident Fund	21.75	Provident Fund	18.58
Other Accounts	0.11	Other Accounts	0.71
Deposits & Advances	2851.58	Deposits & Advances	2793.60
Remittances	---	Remittances	1.12
Reserve Funds	16.62	Reserve Funds	----
Suspense & Miscellaneous	9465.31	Suspense & Miscellaneous	6340.75
Susp. & Misc(Balancing Figure Authorization of Funds etc)	2361.04		
TOTAL (PUBLIC ACCOUNTS)	14716.41	TOTAL (PUBLIC ACCOUNTS)	9154.76
TOTAL RECEIPTS	19939.39	TOTAL DISBURSEMENTS	19939.39

Source: Appropriation Account and SCT

**REVENUE & CAPITAL RECEIPTS
FINANCIAL YEAR 2010-11**

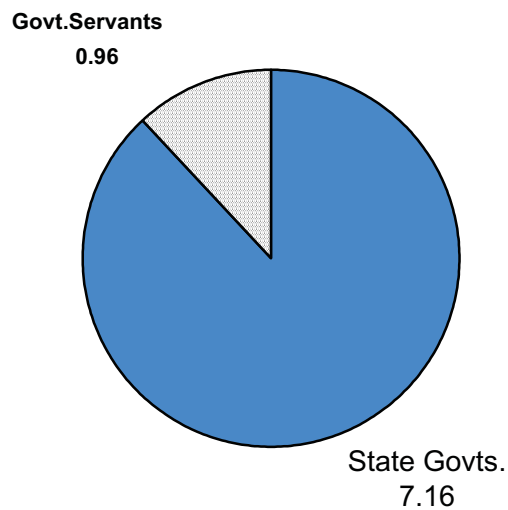
(In Crore of ₹)

REVENUE RECEIPTS



TOTAL REVENUE RECEIPTS = ₹ 5214.86

CAPITAL RECEIPTS



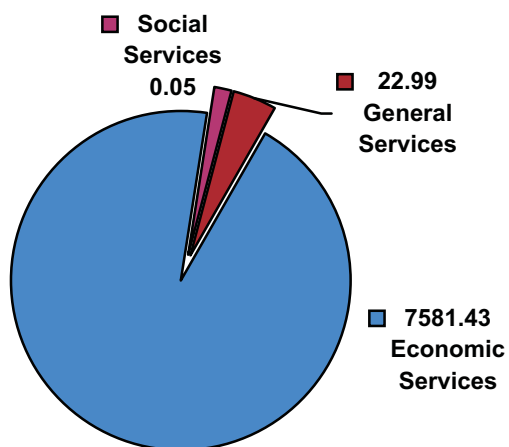
TOTAL CAPITAL RECEIPTS = ₹ 8.12

**REVENUE & CAPITAL DISBURSEMENT (Consolidated Fund of India)
FINANCIAL YEAR 2010-2011**

(In Crore of ₹)

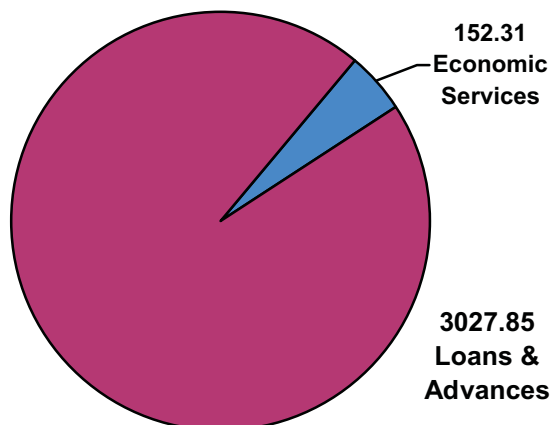
TOTAL = ₹ 7604.47

REVENUE EXPENDITURE



TOTAL = ₹ 3180.16

CAPITAL EXPENDITURE



CHAPTER- 4**RECEIPTS ANALYSIS
MINISTRY OF POWER
FINANCIAL YEAR 2010-2011**

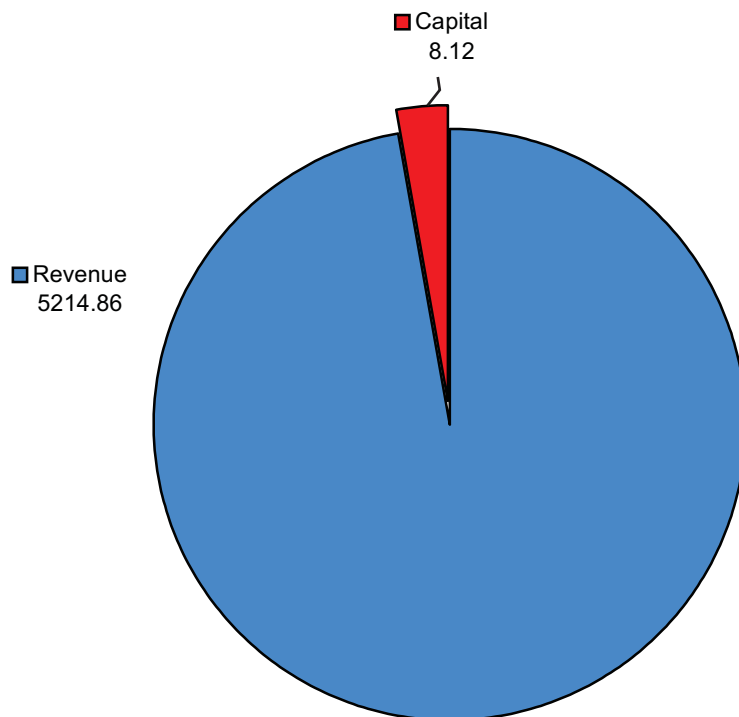
(In Crore of ₹)

S.No.	ITEM(S)	AMOUNT
1.	Tax Revenue	4.97
2.	Non-Tax Revenue	5209.89
3.	TOTAL REVENUE RECEIPTS (1+2)	5214.86
4.	Loan Recoveries from PSUs	----
5.	Loan Recoveries from SEBs	----
6.	Loan Recoveries from State Govts.	7.16
7	Repayment from Govt. Servants	0.96
.8	Miscellaneous loans	---
9	TOTAL CAPITAL RECEIPTS (4+5+6+7+8)	8.12
10	TOTAL RECEIPTS (3+9)	5222.98

Source----SCT

**MINISTRY OF POWER
(RECEIPTS)
FINANCIAL YEAR 2010-2011**

(In Crore of ₹)



TOTAL RECEIPTS = ₹ 5222.98

Source---SCT

**ANALYSIS OF RECEIPTS FOR
MINISTRY OF POWER
FINANCIAL YEAR 2010-2011**

The total receipts of the Ministry of Power in the Consolidated Fund of India during the year 2010-2011 amounted to ₹. 5222.98 crores. The figures consist of ₹ 5214.86 crores from the Revenue Account and ₹. 8.12 crores from Loans and Advances. (Capital Accounts)

The total revenue comprises of ₹. 4.97 crores gross tax revenue and ₹. 5209.89 crores gross Non-tax Revenue & Capital. The major contribution towards Revenue/Capital Receipts was from:

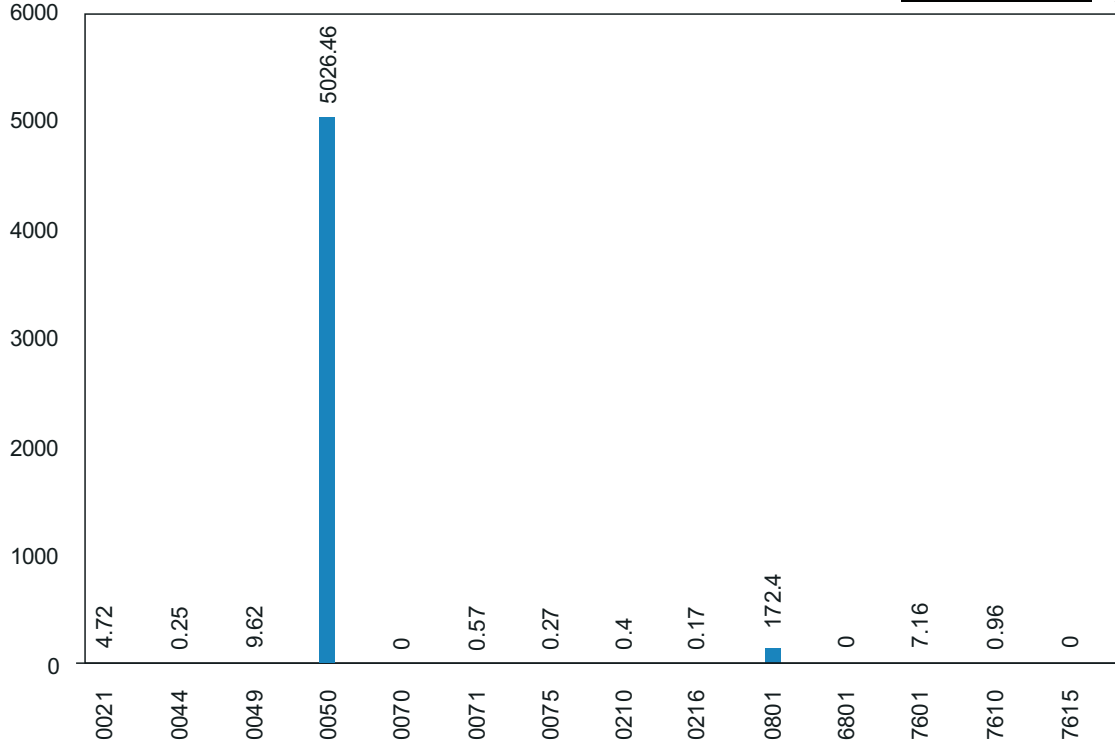
(In Crore of ₹)

S.No.	Major Head of A	AMOUNT
(a)	0021- Tax on Income other than Corporation Tax	4.72
(b)	0044 – Service Tax	0.25
(c)	0049 – Interest Receipts	9.62
(d)	0050 – Dividend and Profits	5026.46
(e)	0070—Other Administrative Services	----
(f)	0071 – Contribution & Recoveries towards Pension & other Retirement Benefits	0.57
(g)	0075 – Miscellaneous General Services	0.27
(h)	0210 – Medical and Public Health	0.40
(i)	0216 – Housing	0.17
(j)	0801 – Power	172.40
(k)	6801 – Loans for Power Projects	----
(l)	7601 – Loans & Advances to State Governments	7.16
(m)	7610 – Loans to Government Servants etc.	0.96
	7615—Miscellaneous loans	----
	TOTAL	5222.98

Source---SCT

**COMPONENTS OF REVENUE & CAPITAL RECEIPTS
FINANCIAL YEAR 2010-2011**

(In Crore of ₹)



TOTAL = ₹. 5222.98

- 0021 – Tax on Income other than Corporation tax
- 0044 – Service Tax
- 0049 --- Interest Receipts
- 0050 – Dividend and Profits
- 0070 -- Other Administrative Services
- 0071 – Contribution & Recoveries towards Pension & other Retirement Benefits
- 0075 – Miscellaneous General Services
- 0210 – Medical and Public Health
- 0216 – Housing
- 0801 – Power
- 6801 – Loans for Power Projects
- 7601 – Loans & Advances to State Governments
- 7610 – Loans to Governments Servants etc.
- 7615— Miscellaneous Loans

Source ---SCT

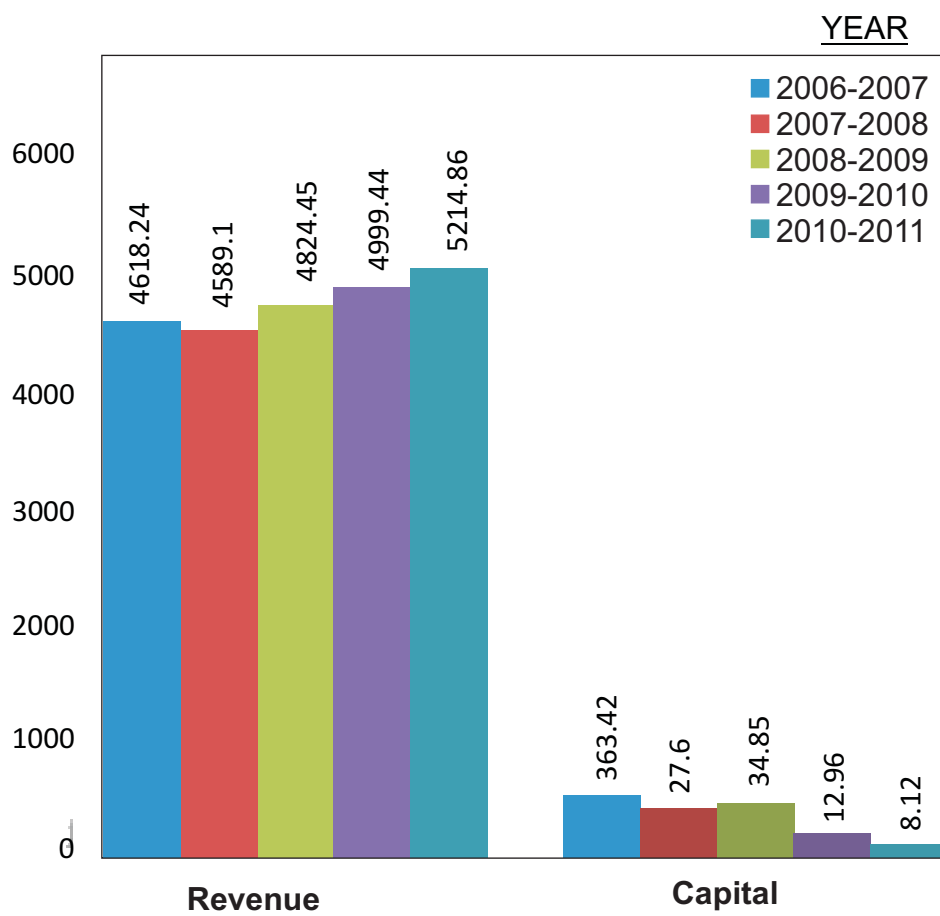
**TREND OF TOTAL RECEIPTS
(CONSOLIDATED FUND OF INDIA)**

(In crore of ₹)

	2006-2007	2007-2008	2008 2009	2009-2010	2010-2011
<u>REVENUE RECEIPTS</u>					
TAX REVENUE	3.06	2.78	5.28	8.60	4.97
<u>NON TAX REVENUE</u>	4615.18	4586.32	4819.17	4990.84	5209.89
Interest Receipts	36.37	11.30	44.17	35.70	9.62
Dividend Profit	3574.92	4216.20	4431.94	4512.34	5026.46
Other Receipts	12.80	1.76	1.19	77.25	1.41
Sale of Power	991.09	357.06	341.87	365.55	172.40
Total	4618.24	4589.10	4824.45	4999.44	5214.86
%age INCREASE OVER PREVIOUS YEAR	-0.71	-0.63	5.13	3.63	4.31
<u>CAPITAL RECEIPTS</u>					
PUBLIC SECTOR UNDERTAKINGS	332.27	4.25	12.24	3.06	----
STATE ELECTRICITY BOARDS	0.67	0.19	3.69	0.06	----
STATE GOVERNMENTS	29.18	21.94	17.89	8.85	7.16
GOVERNMENT SERVANTS	1.30	1.22	1.03	0.99	0.96
TOTAL	363.42	27.60	34.85	12.96	8.12
%age INCREASE OVER PREVIOUS YEAR	450.47	-92.41	26.27	-62.81	-37.35
GRAND TOTAL	4981.66	4616.70	4859.30	5012.40	5222.98
OVERALL % AGE INCREASE	5.61	-7.33	5.25	3.15	4.20

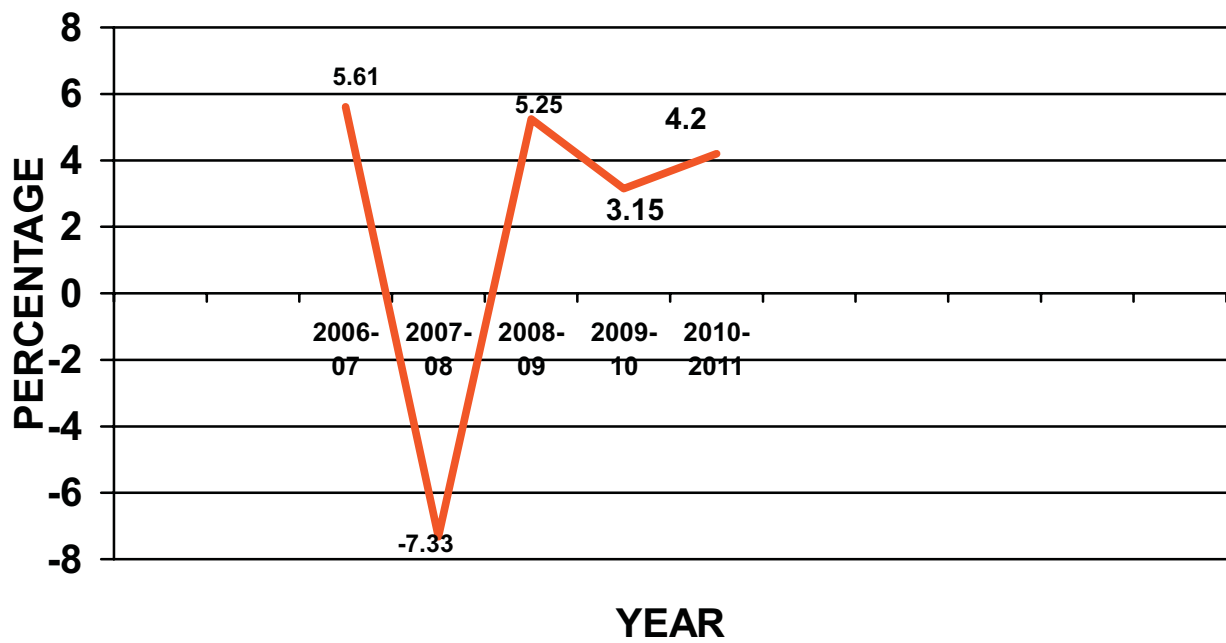
TREND OF TOTAL RECEIPTS
MINISTRY OF POWER

(In Crore of ₹)



TREND OF INCREASE IN TOTAL RECEIPTS MINISTRY OF POWER

In Percentage



CHAPTER- 5

Expenditure Analysis

**BUDGET AND EXPENDITURE
MINISTRY OF POWER
GRANT NO.74**

(-) Saving

(In crore of ₹)

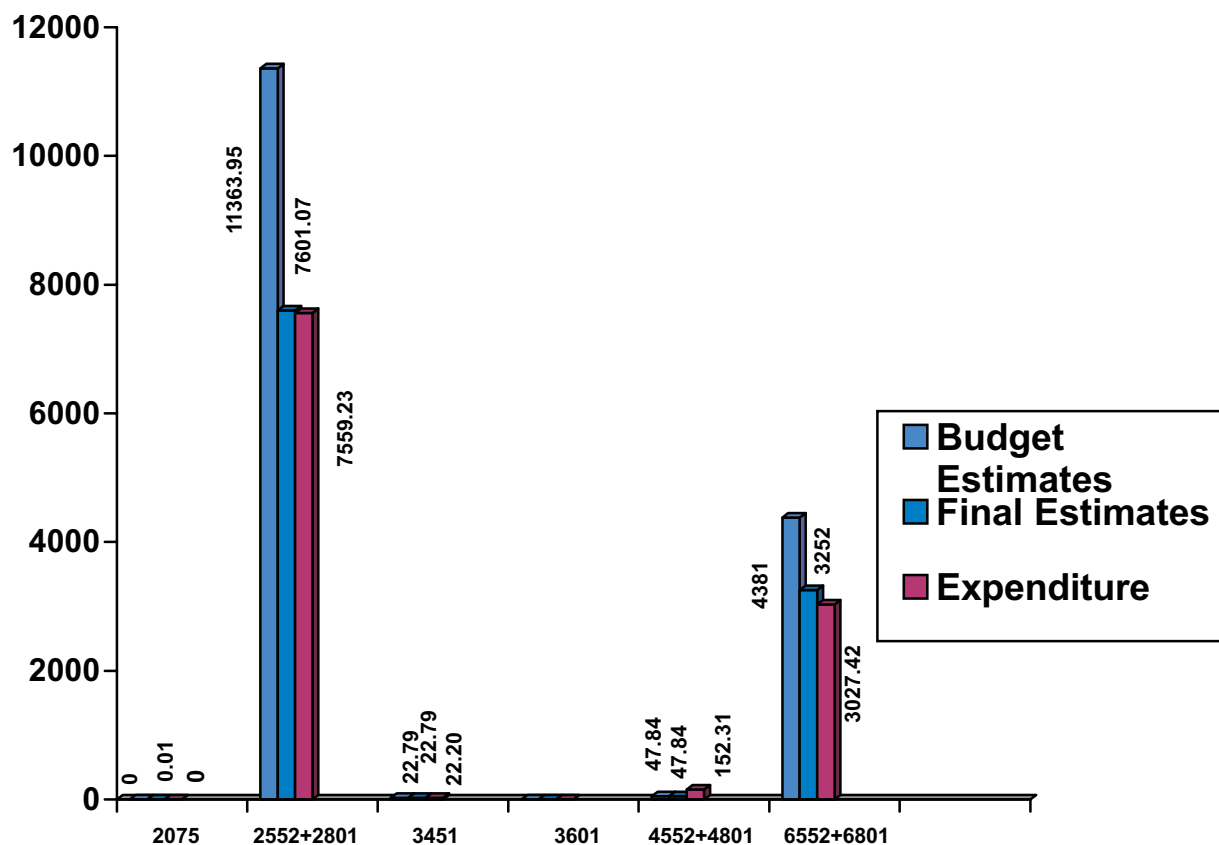
	Budget estimates	Final estimates	Actual	Variations with BE (%)	Variations with FE (%)
GROSS	15815.58	10923.71	10761.16	-31.96	-1.50
NET	15815.58	10923.71	10761.16	-31.96	-1.50

MAJOR HEAD OF ACCOUNT	Budget Estimates			Final Estimates			Expenditure		
	Plan	Non-Plan	Total	Plan	Non-Plan	Total	Plan	Non-Plan	Total
REVENUE SECTION									
2075	---	---	---	---	0.01	0.01	---	---	---
2801+2552	11252.16	111.79	11363.95	7476.37	124.70	7601.07	7473.11	86.12	7559.23
3451	1.00	21.79	22.79	1.00	21.79	22.79	0.96	21.24	22.20
3601	---	---	---	---	---	---	---	---	---
Total Revenue Section	11253.16	133.58	11386.74	7477.37	146.50	7623.87	7474.07	107.36	7581.43
CAPITAL SECTION									
4552	45.00	---	45.00	45.00	---	45.00	--	--	---
4801	2.84	---	2.84	2.84	---	2.84	152.31	---	152.31
6552	370.00	---	370.00	257.10	---	257.10	---	---	---
6801	4011.00	---	4011.00	2994.90	---	2994.90	3027.42	--	3027.42
Total Capital Section	4428.84	---	4428.84	3299.84	---	3299.84	3179.73	--	3179.73
GRAND TOTAL	15682.00	133.58	15815.58	10777.21	146.50	10923.71	10653.80	107.36	10761.16

(Source : Appropriation A/cs)

**BUDGET V/S EXPENDITURE GRANT NO.74
(Major Head-wise)
FINANCIAL YEAR 2010-2011**

(In Crore of ₹)



- 2075 : Miscellaneous General Services
- 2552 : North east areas
- 2801 : Power
- 3451 : Secretariat – Economic Services
- 3601 : Grants-in-aid to State Govts.
- 4552 : Capital Outlay on North East
- 4801 : Capital Outlay on Power Projects
- 6552 : Loans for North Eastern Projects
- 6801 : Loans for Power Projects

**GRANT-WISE MONTHLY FLOW OF EXPENDITURE
FINANCIAL YEAR 2010-2011**

(In crore of ₹)

Grant No.	APR	MAY	JUNE	JULY	AUG	SEP	OCT	NOV	DEC	JAN	FEB	MARCH /March (Sy)	Deduct Recoveries/ Authorizati on for the year	TOTAL
34	—	0.01	0.01	0.01	0.02	0.04	0.02	0.01	0.01	0.03	0.04	5.58	—	5.78
36	—	—	0.04	0.01	0.08	0.03	0.11	—	0.09	0.02	0.02	0.03	—	0.43
39	2.44	1.90	1.14	1.08	1.50	2.20	1.54	0.61	0.96	1.37	0.86	1.66	—	17.26
74	545.72	6.47	366.34	492.65	17.70	2611.01	9.20	-19.66	1359.65	8.42	2135.80	2361.823	2361.04	10761.16
TOTAL	548.16	8.38	367.53	493.75	19.30	2613.28	10.87	-19.04	1360.71	9.84	2136.72	874.09	2361.04	10784.63

Grant No. 34 : Interest Payments - M/o Finance
Grant No. 36 : Loans to Govt. Servants
Grant No. 39 : Pension and other Retirement Benefits
Grant No. 74 : Power

**HEADWISE, GRANT-WISE MONTHLY FLOW OF EXPENDITURE
FINANCIAL YEAR 2010-2011**

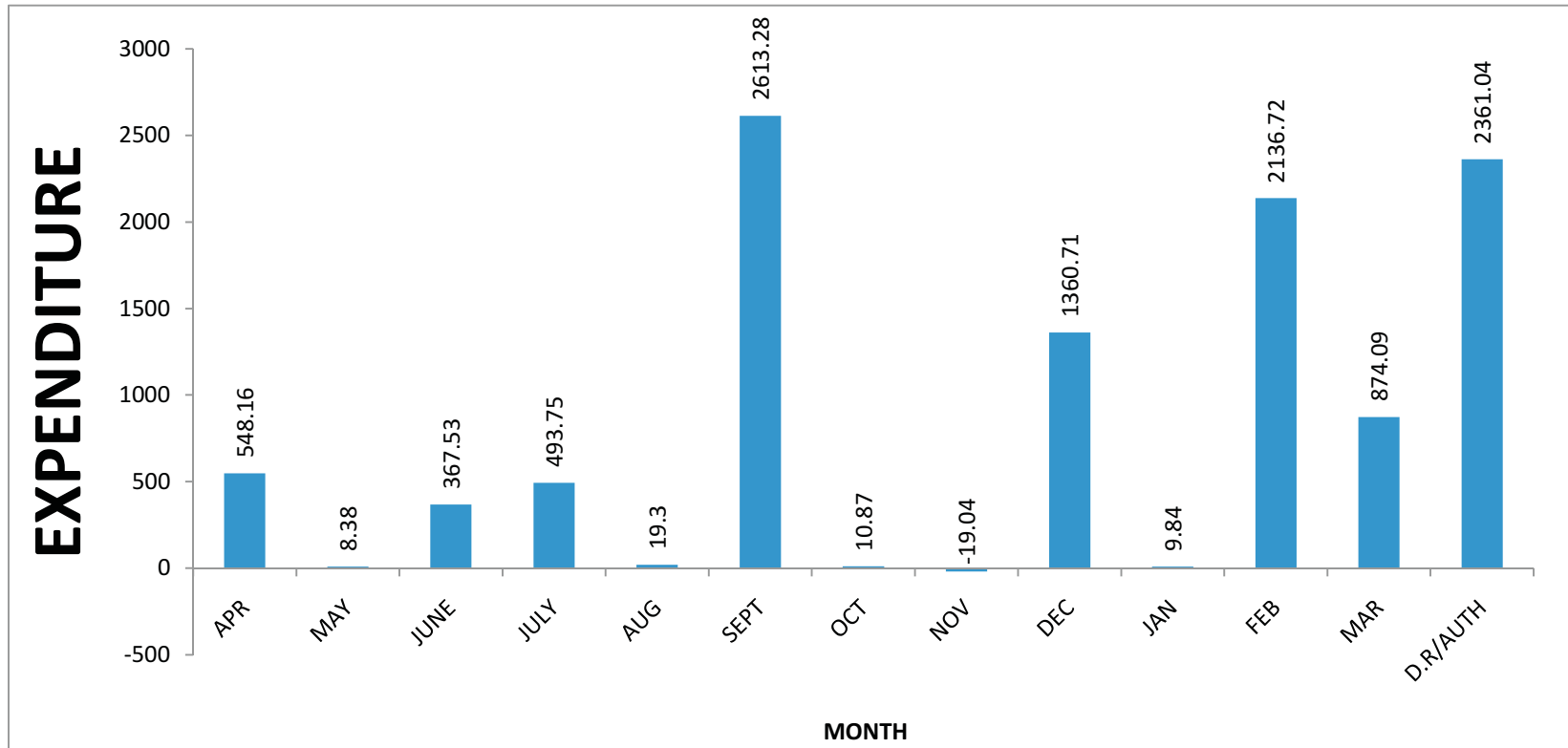
(In crore of ₹)

Head of A/c	Grant No	APR	MAY	JUNE	JULY	AUG	SEP	OCT	NOV	DEC	JAN	FEB	MARCH /March (Sy)	Deduct recoveries/Authorization for the year	Total
2049	34	---	0.01	0.01	0.01	0.02	0.04	0.02	0.01	0.01	0.03	0.04	5.58	---	5.78
7610	36	—	0.00	0.04	0.01	0.08	0.03	0.11	—	0.09	0.02	0.02	0.03	---	0.43
2071	39	2.42	1.90	1.14	1.08	1.50	2.20	1.54	0.59	0.96	1.36	0.86	1.66	---	17.21
2235	39	0.02	--	---	---	---	----	---	0.02	--	0.01	--	--	---	0.05
2075	74	---	--	---	---	---	----	---	---	--	--	--	---	--	----
2801	74	542.86	4.46	14.77	491.00	16.04	1540.37	7.18	-21.50	849.81	6.71	1238.98	614.71	2253.66	7559.23
3451	74	2.86	1.83	1.77	1.65	1.66	1.78	2.02	1.84	1.84	1.71	1.72	1.48	0.07	22.20
4801	74	—	—	—	—	—	—	—	—	—	—	45.00	----	107.31	152.31
6801	74	—	—	349.83	—	—	1068.86	—	—	508.00	—	850.10	250.63	----	3027.42
TOTAL		548.16	8.38	367.53	493.75	19.30	2613.28	10.87	-19.04	1360.71	9.84	2136.72	874.09	2361.04	10784.63

2049 : Interest Payment
7610 : Loans & Advances
2071 : Pension & other Retirement Benefits
2075 : General Services
2235 : Social Security & Welfare
2801 : Power
3451 : Secretariat-Economic Services
4801 : Capital Outlay on Power Projects
6801 : Loans for Power Projects

TREND OF MONTHLY FLOW OF EXPENDITURE
FINANCIAL YEAR 2010-2011

(In Crore ₹) of



**GRANT-WISE EXPENDITURE
FINANCIAL YEAR 2010-2011**

(In Crore of ₹)

GRANT NO.	REVENUE	CAPITAL	TOTAL
34	5.78	0.00	5.78
36	0.00	0.43	0.43
39	17.26	0.00	17.26
74	7581.43	3179.73	10761.16
GRANT TOTAL	7604.47	3180.16	10784.63

**ANALYSIS OF DISBURSEMENTS
TOTAL BUDGET OUTLAY AND EXPENDITURE
(Plan/Non-Plan/Sector-wise)
Financial Year 2010-2011**

(In crore of ₹)

	BUDGET ESTIMATE	FINAL ESTIMATES	EXPENDI TURE
<u>REVENUE SECTION</u>			
PLAN	11253.16	7477.37	5220.72
NON-PLAN	134.58	147.50	130.01
TOTAL	11387.74	7624.87	5350.73
<u>CAPITAL SECTION</u>			
PLAN	4428.84	3299.84	3072.42
NON-PLAN	----	---	---
TOTAL	4428.84	3299.84	3072.42
GRAND TOTAL	15816.58	10924.71	8423.15

SOURCE: S.C.T.

**ANALYSIS OF DISBURSEMENTS
Budget Outlay and Expenditure
Ministry of Power
Grant No.74
2010-2011**

(In crore of ₹)

	BUDGET ESTIMATE	FINAL ESTIMATES	EXPEN DITURE
<u>REVENUE SECTION</u>			
PLAN	11253.16	7477.37	7474.07
NON-PLAN	133.58	146.50	107.36
TOTAL	11386.74	7623.87	7581.43
<u>CAPITAL SECTION</u>			
PLAN	4428.84	3299.84	3179.73
NON-PLAN	--	--	---
TOTAL	4428.84	3299.84	3179.73
GRAND TOTAL	15815.58	10923.71	10761.16

SOURCE: Appropriation Accounts

Note :- There is difference between two sets of figures due to authorization of funds to other Ministries/ Departments

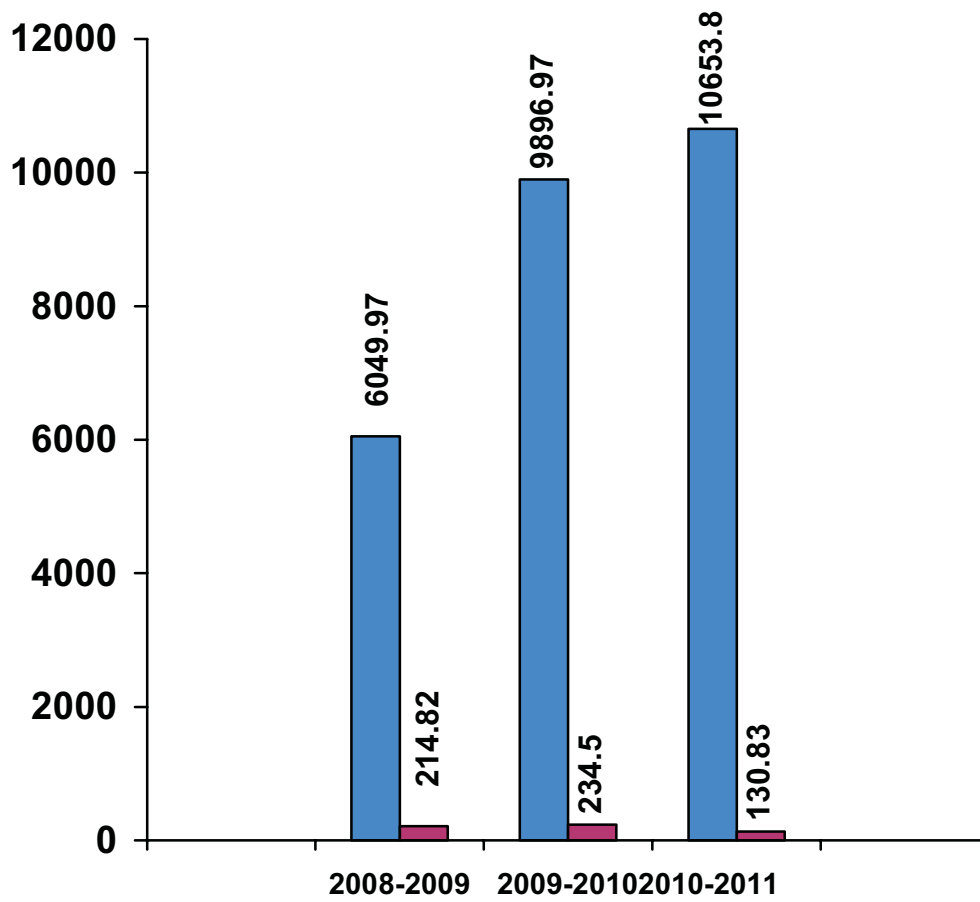
TREND OF SECTORAL ANALYSIS OF EXPENDITURE

(In Crore of ₹)

Particulars	2008-2009			2009-2010			2010-2011		
	Plan	Non Plan	Total Plan	Non Plan	Total	Plan	Non Plan	Total	
<u>Revenue Account</u>									
General Service	--	18.51	18.51	---	100.95	100.95	---	22.99	22.99
Social Service	----	0.01	0.01	----	0.03	0.03	----	0.05	0.05
Economic Service	5672.15	196.04	5868.19	8317.21	133.04	8450.25	7474.07	107.36	7581.43
Grants in Aid									
Total (A)	5672.15	214.56	5886.71	8317.21	234.02	8551.23	7474.07	130.40	7604.47
<u>Capital Account</u>									
Economic Service	18.82	---	18.82	63.30	---	63.30	152.31	---	152.31
Loans & Advances	359.00	0.26	359.26	1516.46	0.48	1516.94	3027.42	0.43	3027.85
Total (B)	377.82	0.26	378.08	1579.76	0.48	1580.24	3179.73	0.43	3180.16
Grand Total (A+B)	6049.97	214.82	6264.79	9896.97	234.50	10131.47	10653.80	130.83	10784.63

TREND OF PLAN & NON-PLAN EXPENDITURE MINISTRY OF POWER

(In Crore of ₹)



■ PLAN EXPENDITURE
■ NON-PLAN EXPENDITURE

**APPROPRIATION ACCOUNTS
FOR THE YEAR 2010-2011
GRANT NO.74- MINISTRY OF POWER**

(In Thousands of ₹)

REVENUE:

		Total Grant OR Appropriation	Actual Expenditure	Saving – Excess +
Voted				
Original	11386,74,00	11418,97,00	7581,43,02	-3837,53,98
Supplementary	32,23,00			
Amount Surrendered during the year within Grant				
R	3832, 87, 81	3832, 87,81	---	-3832,87,81

Capital

Voted				
Original	4428,84,00	5139,49,00	3179,72,51	-1959,76,49
Supplementary	710,65,00			
Amount surrender during the year				
R	1458, 82, 00	1458, 82, 00	---	-1458,82,00

Source:--Appropriation Accounts

**MAJOR HEADWISE APPROPRIATION ACCOUNTS
FOR THE YEAR 2010-2011
Ministry of Power**

(In thousands of ₹)

Major Head	Total Grant OR Appropriation	Actual Expenditure	Saving – Excess +
Revenue Section			
<u>Major Head '2075'</u>			
S. 100	-----	-----	---
R. -100			
<u>Major Head '2552'</u>			
O. 6480000	775800	----	-775800
R. -5704200			
<u>Major Head '2801'</u>			
voted			
O. 107159500			
S. 322200	74861964	75592295	+730331
R. -32619736			
<u>Major Head '3451'</u>			
O. 227900			
R. -4745	223155	222007	-1148
Capital Section			
<u>Major Head '4552'</u>			
O. 450000	--	--	---
R. -450000			
<u>Major Head '4801'</u>			
O. 28400			
S. 7106500			
R. -602400	6532500	1523051	-5009449
<u>Major Head '6552'</u>			
O. 3700000			
R. -3700000	---		-
<u>Major Head '6801'</u>			
O. 40110000			
R. -9835800	30274200	30274200	----

Source:--Appropriation Accounts

COMPOSITE GRANT**STATEMENT No.1****Major Head 2049****(AMOUNT IN ₹)**

MAJOR HEAD – 2049 INTEREST PAYMENT	2007-2008	2008-2009	2009-2010	2010-2011
(i) Interest on State Provident Funds (GPF)	60479838	65832344	64781162	57756197
(ii) Interest on Reserve Fund on Depreciation/ Renewal Reserve Fund	---	---	---	---
(iii) Miscellaneous – Other expenditure	---	---	---	---
(iv) Interest on Defined Contribution Pension Scheme	113506	---	---	---
(v) Interest on Deposits by PSUs	---	---	---	---
TOTAL MH '2049'	60593344	65832344	64781162	57756197

STATEMENT No. 2
MAJOR HEAD '2071'

(Amount in ₹)

MAJOR HEAD '2071' Pension & Other Retirement Benefits	2006-2007	2007-2008	2008-2009	2009-2010	2010-2011
(i) (a) Superannuation and Retirement Allowances	1,83,041	328080	219327	374405	683153
(ii) Commuted value of Pension	3,05,10,646	34833636	38554103	58302308	58198351
(iii) Gratuities	2,50,75,610	27134584	36674735	77462073	68288681
(iv) Contribution to Pension and Gratuities	55,129	2382649	---	---	-----
(v) Family Pension Charges	2,18,609	-----	----	---	-----
(vi) Leave Encashment	1,72,93,773	21237808	42627058	49436519	42581014
(vii)Contribution to GPF	1,50,973	----	---	---	372000
(viii) Deduct amount (New Pension Scheme)	---	-1868693	1158799	1692371	1983035
TOTAL MH'2071'	7,34,87,781	84048064	119234022	187267676	172106234

STATEMENT No 3
SOCIAL SECURITY & WELFARE

MAJOR HEAD '2235'

(Actuals)

(Amount in ₹)

MAJOR HEAD '2235 Social Security & Welfare	2006-07	2007-08	2008-09	2009-10	2010-2011
(i) Deposit Linked Insurance Scheme Govt. Provident Fund	3,05,285	240000	120000	300000	458630
(ii) Govt Employees Insurance Scheme Central Government Insurance Scheme	3,036	----	3229	-----	13343
(ii) Pension (Voted) Other Scheme – Lump Sum Provision	---	----	----	----	---
TOTAL MH'2235'	3,08,321	240000	123229	300000	471973

Source--SCT

STATEMENT No 4
LOANS TO GOVT. SERVANTS

MAJOR HEAD '7610' Loans to Govt Servants	(In Thousands of ₹)				
	2006-2007	2007-2008	2008-09	2009-10	2010-11
(i) House Building Advance	31,36	21,65	7,74	25,00	22,49
(ii) Advance for purchase of Motor Conveyance	14,12	13,13	15,02	17,39	7,84
(iii) Advance for purchase of Other Conveyance	3	3,82	2	9	3
(iv) Other Advances	1	---	---	---	---
(v) Personal Computer Advance	6,10	7,45	3,54	5,44	12,68
TOTAL MH'7610'	51,62	46,05	26,32	47,92	43,04

Source---Monthly A/c

STATEMENT No 5

(In Crore of ₹)

YEAR	ACCOUNTS FIGURES			RESERVE BANK DEPOSITS M.H. 8675			DIFFERENCE		
	Dr	Cr	Net	Dr	Cr	Net	Dr	Cr	Net
2001-02	17202.33	14947.70	2254.63	14947.70	17202.33	2254.63	NIL	NIL	NIL
2002-03	23335.58	16257.39	7078.19	16257.39	23335.58	7078.19	NIL	NIL	NIL
2003-04	26762.80	19501.84	7260.96	19501.84	26762.80	7260.96	NIL	NIL	NIL
2004-05	30017.11	34735.64	4718.53	34735.64	30017.11	4718.53	NIL	NIL	NIL
2005-06	5080.34	4206.73	873.61	4206.73	5080.34	873.61	NIL	NIL	NIL
2006-07	5421.22	6150.92	729.70	6150.92	5421.22	729.70	NIL	NIL	NIL
2007-08	5119.42	4862.19	257.24	4862.19	5119.42	257.24	NIL	NIL	NIL
2008-09	5435.55	7368.07	1932.52	7368.07	5435.55	1932.52	NIL	NIL	NIL
2009-10	5716.35	6817.56	1101.21	6817.56	5716.35	1101.21	NIL	NIL	NIL
2010-11	6340.41	9423.56	3083.15	9423.56	6340.41	3083.15	NIL	NIL	NIL

STATEMENT NO.6
MAJOR HEAD '8670' – CHEQUES & BILLS

(In thousands of ₹)

YEAR	OPENING BALANCE	AMOUNT BOOKED	AMOUNT CLEARD	CLOSING BALANCE
2003-2004	561,78,29	19256,65,	19501,86,59	316,47,35
2004-2005	316,47,35	34663,57,97	34735,33,51	244,71,81
2005--2006	244,71,81	4378,93,39	4206,73,33	416,91,87
2006-2007	416,91,87	6562,30,84	6150,91,65	828,31,06
2007-2008	828,31,06	5263,45,31	4862,18,64	1229,57,73
2008-2009	1229,57,73	6768,98,78	7966,97,47	31,59,04
2009-2010	31,59,04	7417,91,30	6823,8875	625,61,59
2010-2011	625,61,59	9465,30,82	9424,06,05	666,86,36

STATEMENT NO.7
MAJOR HEAD '8658' - SUSPENSE ACCOUNTS
(Minor Head '101'-PAO SUSPENSE)

(In Thousand of ₹)

YEAR	OPENING BALANCE	AMOUNT BOOKED	AMOUNT CLEARED	CLOSING BALANCE
2005-2006				
(1)Credit	-110	18	14	-106
(2) Debit	-4223	5583	900	460
Net	-4113	5565	886	566
2006-2007				
(1)Credit	-106	289	287	-104
(2) Debit	460	333	44045	-43252
Net	566	44	43758	-43148
2007-2008				
(1)Credit	-104	275	278	-107
(2) Debit	-43252	48905	3353	2300
Net	-43148	48630	3075	2407
2008-2009				
(I) Credit	-107	486	486	-107
(ii) Debit	2300	4521	6016	805
Net	2407	5007	6502	912
2009-2010				
(I) Credit	-107	2607	2641	-141
(ii) Debit	805	1558	1734	629
Net	912	-1049	-907	770
2010-2011				
(I) Credit	-141	648	648	-141
(ii) Debit	629	91	653	67
Net	770	739	1301	208

STATEMENT NO. 7 (A)

MAJOR HEAD '8658-102' - SUSPENSE ACCOUNTS (CIVIL)

(In thousand of ₹)

YEAR	OPENING BALANCE	AMOUNT BOOKED	AMOUNT CLEARED	CLOSING BALANCE
Net	131(dr)	54(Dr)	57(Dr)28(Dr)	
2004-2005				
(I) Credit	2	1	1	2
(ii) Debit	130	47	54	123
Net	128 (DR)	46(DR)	43(DR)	121(DR)
2005-2006				
I)Credit	2	—	—	2
(ii)Debit	123	64	47	140
Net	121	64	47	138
2006-2007				
(I)Credit	2	---	----	2
(ii)Debit	140	81	73	148
Net	138	81	73	146
2007-2008				
(I)Credit	2	—	2	---
(ii)Debit	148	-	149	-1
Net	146	—	147	-1
2008-2009				
(I) Credit	—	—	—	—
(ii) Debit	-1	—	—	-1
Net	-1	—	—	-1
2009-2010				
(I) Credit	—	—	—	----
(ii) Debit	-1	—	—	-1
Net	-1	—	—	-1
2010-2011				
(I) Credit	—	—	—	----
(ii) Debit	-1	—	—	-1
Net	-1	—	—	-1

STATEMENT NO.7 (B)**MAJOR HEAD '8658-108' -PSB SUSPENSE****(In Thousand of ₹)**

YEAR	OPENING BALANCE	AMOUNT BOOKED	AMOUNT CLEARED	CLOSING BALANCE
2004-2005				
(I) Credit	-82	347353351	347356402	-3133
(ii) Debit	NIL	299622504	299629644	-7140
Net	-82	47730847	47726758	4007
2005-2006				
(!)Credit	-3133	42068767	420673333	-1699
(11)Debit	-7140	50336992	50330549	-697
Net	-4007	-8268225	-8263216	-1002(Cr)
2006-2007				
(!)Credit	-1699	57330521	61509164	-4180342
(11)Debit	-697	53799499	53793998	4804
Net	-1002	3531022	7715166	-4185146(Cr)
2007-2008				
(!)Credit	-4180342	46724114	48621864	-6078092
(11)Debit	4804	50871732	50879205	-2669
Net	-4185146	-4147618	-2257341	-6075423(Cr)
2008-2009				
(I) Credit	-6078092	79669746	73660908	-69254
(ii) Debit	-2669	54057507	54082403	-27565
Net	-6075423	25612239	19578505	-41689 (Cr)
2009-2010				
(I) Credit	-69254	68238874	68175642	6022
(ii) Debit	-27565	57041226	57018075	-4414
Net	-41689	11197648	11157567	-1608(Cr)
2010-2011				
(I) Credit	-6022	94240605	94235559	-976
(ii) Debit	-4414	63297059	63293098	-453
Net	-1608	30943546	30942461	-523(Cr)

CHAPTER- 6**OTHER AREAS
INVESTMENTS AND LOANS****Investment with various P.S.U.s/Autonomous Bodies****INVESTMENT MADE BY GOVERNMENT OF INDIA
WITH VARIOUS P.S.U.s/AUTONOMOUS BODIES LAST THREE YEARS.****Investment made by Government of India in various Public Sector Undertakings.****(In crore of ₹)**

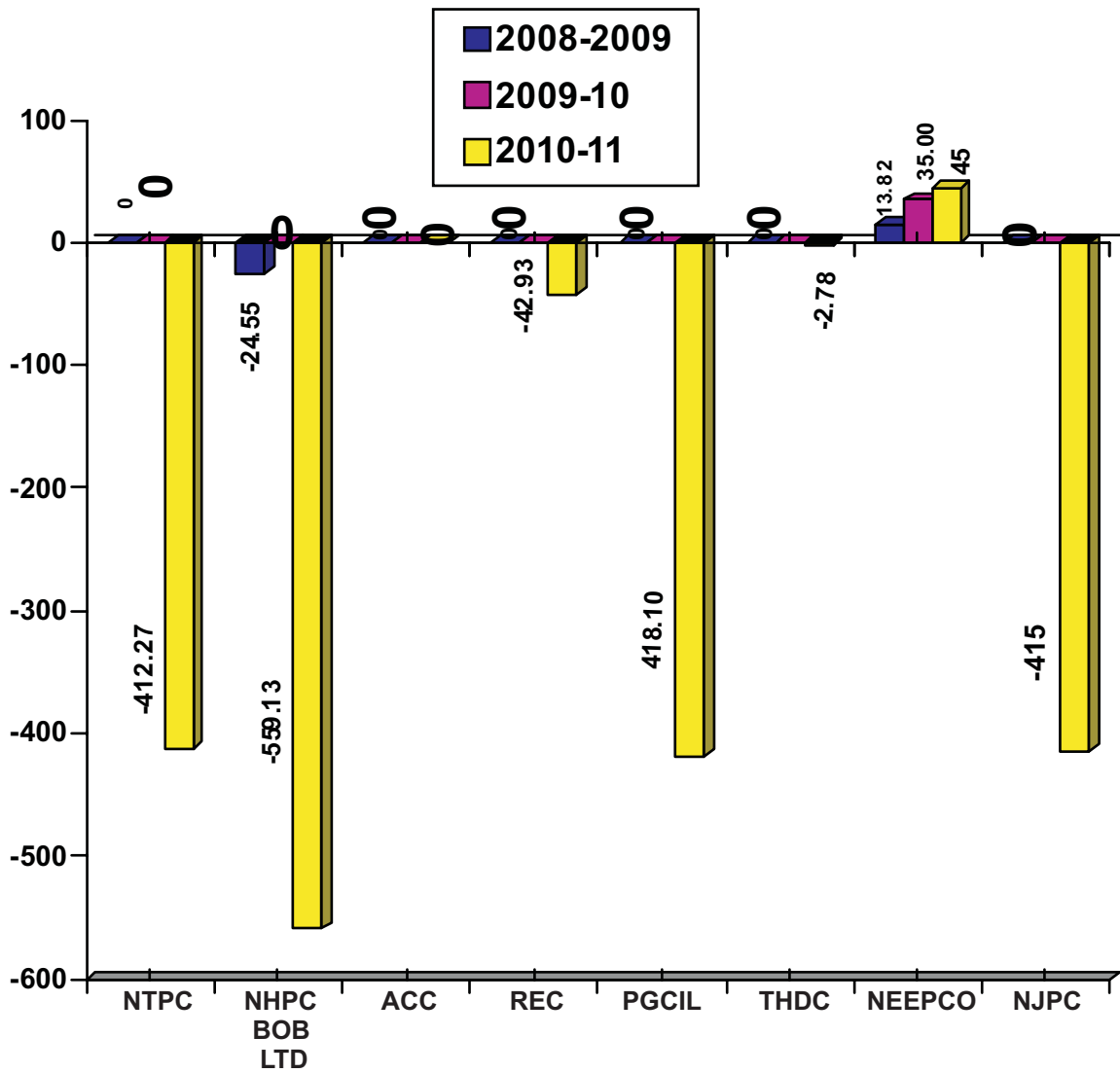
Sl. No	Public Sector Undertaking	2008-2009	2009-2010	2010-2011	Investment as on 31.3.2011
1	National Thermal Power Corporation	---	---	-412.27	6967.36
2	National Hydro Electric Power Corp.	PPA(-)24.55	----	-559.13	10306.70
3	Nathpa Jhakri Power Corporation (SJVN)	0.00	0.00	-415.00	2666.61
4	Rural Electrification Corporation	0.00	0.00	-42.93	659.61
5	Power Finance Corporation	0.00	0.00	0.00	1030.45
6	Tehri Hydro Development Corporation	0.00	0.00	-2.78	2373.70
7	Power Grid Corporation of India Ltd.	0.00	0.00	-420.88 2.78	2998.55
8	North Eastern Electric Power Corp.	13.8	35.00	45.00	1917.19
9	ACC Babcock Ltd	0.00	0.00	0.00	26.00
	Total	-10.73	35.00	-1805.21	28946.17

(-) figure means disinvestment admitted by O/o CGA

SOURCE: FINANCE ACCOUNT & statement No.10&11 (Loan Section)

INVESTMENTS

Investment with various P.S.U.s/Autonomous Bodies



**SECTORAL ANALYSIS OF OTHER EXPEN DITURE INCURRED AND INVESTMENT
MADE IN VARIOUS PSUs UNDER MINISTRY OF
POWER M.H.'4801'/4552**

(In Crore of ₹)

Particulars/ Sector	2006-2007	2007-2008	2008-09	2009-10	2010-11
HYDEL	655.88	70.74	-24.23	----	-976.90
THERMAL	—	---	0.41	—	-412.27
DIESEL/GAS	204.08	163.53	13.82	35.00	45.00
REC	—	—	—	—	-42.93
T&D	200.00	0.0	—	—	-418.11
GENERAL	0.08	0.04	—	—	---
TOTAL	1060.04	234.31	-10.00	35.00	-1805.21

HYDEL : NHPC, SJVN (formerly NJPC), THDC & SARDAR SAROVAR

THERMAL : DVC, NTPC & BTPS/ (formerly BTTP)

DIESEL/GAS : NEEPCO

TRANSMISSION &

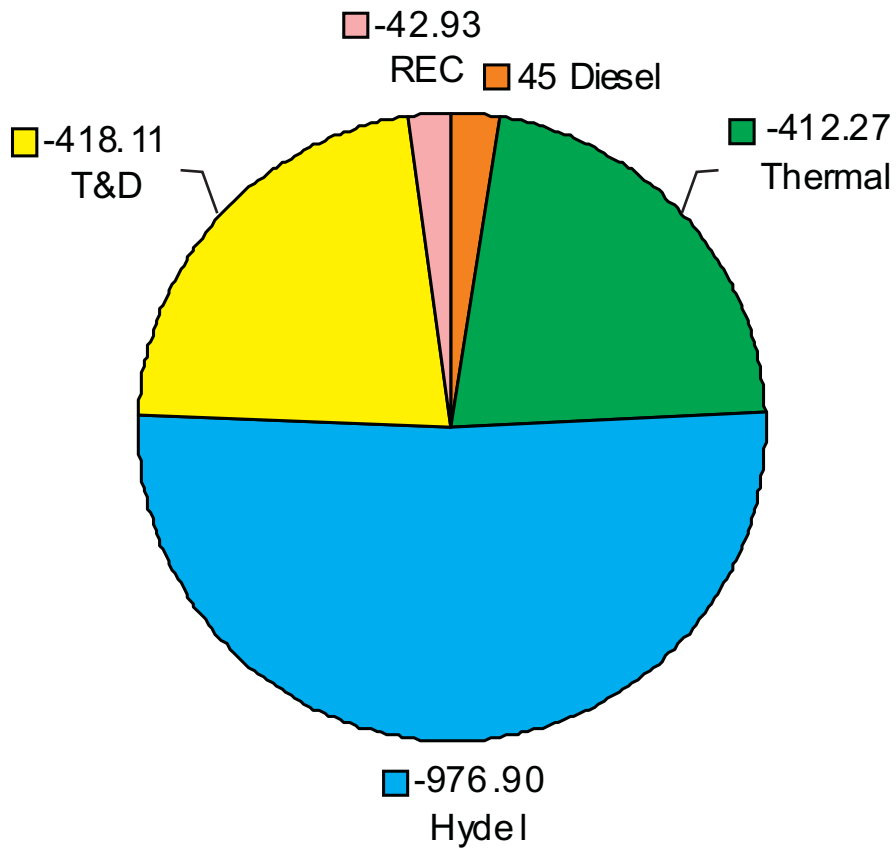
DISTRIBUTION : PGCIL, LDS & HVDC

GENERAL : PFC, NPTI (PSTI, HLTC) AND OTHERS

Note : - Minus balance is due to disinvestment on equity during the year 2010-11 and also the effect of PPA.

**CAPITAL EXPENDITURE (INVESTMENTS)
FINANCIAL YEAR 2010-2011**

(In Crore of ₹)



TOTAL = ₹. -1805.21 (crore)

**OTHER AREAS
INVESTMENTS AND OTHER EXPENDITURE
MAJOR HEAD “4801”**

**INVESTMENT MADE AND OTHER EXPENDITURE INCURRED BY GOVERNMENT
OF INDIA WITH VARIOUS P.S.U.s/AUTONOMOUS BODIES DURING LAST FOUR
YEARS.**

(In crore of ₹)

Sl.No	Public Sector Undertaking	2007-2008	2008-2009	2009-2010	2010-2011
1	National Thermal Power Corporation	---	PPA 0.41	---	-412.27
2	National Hydro Electric Power Corp.	PPA 8.83	PPA -24.55 0.32	----	-559.13
3	Nahtpa Jhakri Power Corporation	----	----	---	-415.00
4	Rural Electrification Corporation	----	----	----	-42.93
5	Power Finance Corporation	----	----	----	0.00
6	Tehri Hydro Development Corporation	70.74	----	----	-2.78
7	Power Grid Corporation of India Ltd.	----	----	----	-420.88 2.78
8	North Eastern Electric Power Corp.	163.53	13.82	35.00	45.00
9	Expenditure on other Schemes	0.04	—	---	0.00
10	ACC Bobcock Ltd	—	—	----	0.00
11	Badarpur Thermal Power Project	---	----	----	----
	Total	243.14	-10.00	35.00	-1805.21

Note:

SOURCE : FINANCE ACCOUNTS & Statement No.10 (Loan Section)

**STATEMENT SHOWING GRANTS-IN-AID RELEASED TO VARIOUS
AUTONOMOUS BODIES/STATUTORY BO DIES AND NGOs FOR THE LAST
THREE YEARS**

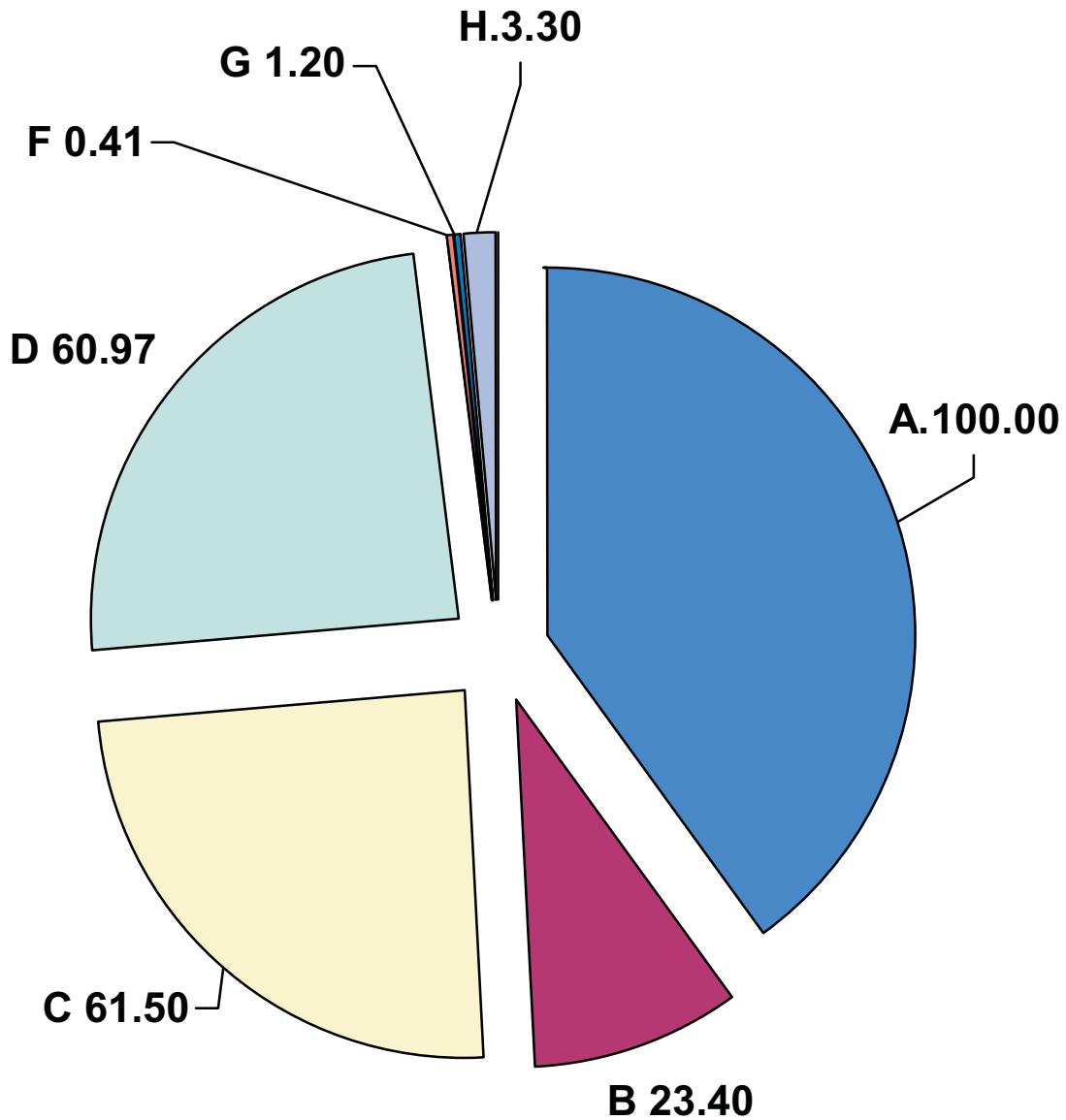
(In Crore of ₹)

Sl.No.	Name of Undertakings/Institute	Sanctioned amount			Grant Released		
		2008-2009	2009-2010	2010-2011	2008-2009	2009-2010	2010-2011
1	Power Finance Corporation	25.00	80.00	100.00	25.00	1.26	100.00
2	National Power Training Institute	27.29	22.00	23.40	27.28	21.90	23.40
3	Central Power Research Institute	30.00	55.00	61.51	29.11	41.50	61.51
4	Bureau of Energy Efficiency	70.00	82.00	61.84	61.30	57.84	60.97
5	CERC	7.27	7.00	4.00	7.27	4.00	----
6	THDC	2.04	0.01	0.41	2.04	0.01	0.41
7	Joint Electricity Regulatory Commission for Manipur & Mizoram	1.44	1.25	1.25	1.02	0.82	1.20
8	Joint SERC for Union Territories	----	3.00	4.00	----	3.00	3.30
	Total	163.04	250.26	256.41	153.02	130.33	250.79

Source: Monthly Accounts

**EXPENDITURE (GRANTS-IN-AID)
FINANCIAL YEAR 2010-2011**

(In Crore of ₹)



- A : Accelerated Power Development and Reform Programme
- B : National Power Training Institute
- C : Central Power Research Institute
- D : Bureau of Energy Efficiency
- E : CERC
- F : THDC
- G : Regulatory commission for Manipur Mizoram
- H : SERC for Union Territories

**MINISTRY OF POWER
LOANS, PAYMENTS, REPAYMENTS & OUTSTANDING
AS ON 31.03.2011**

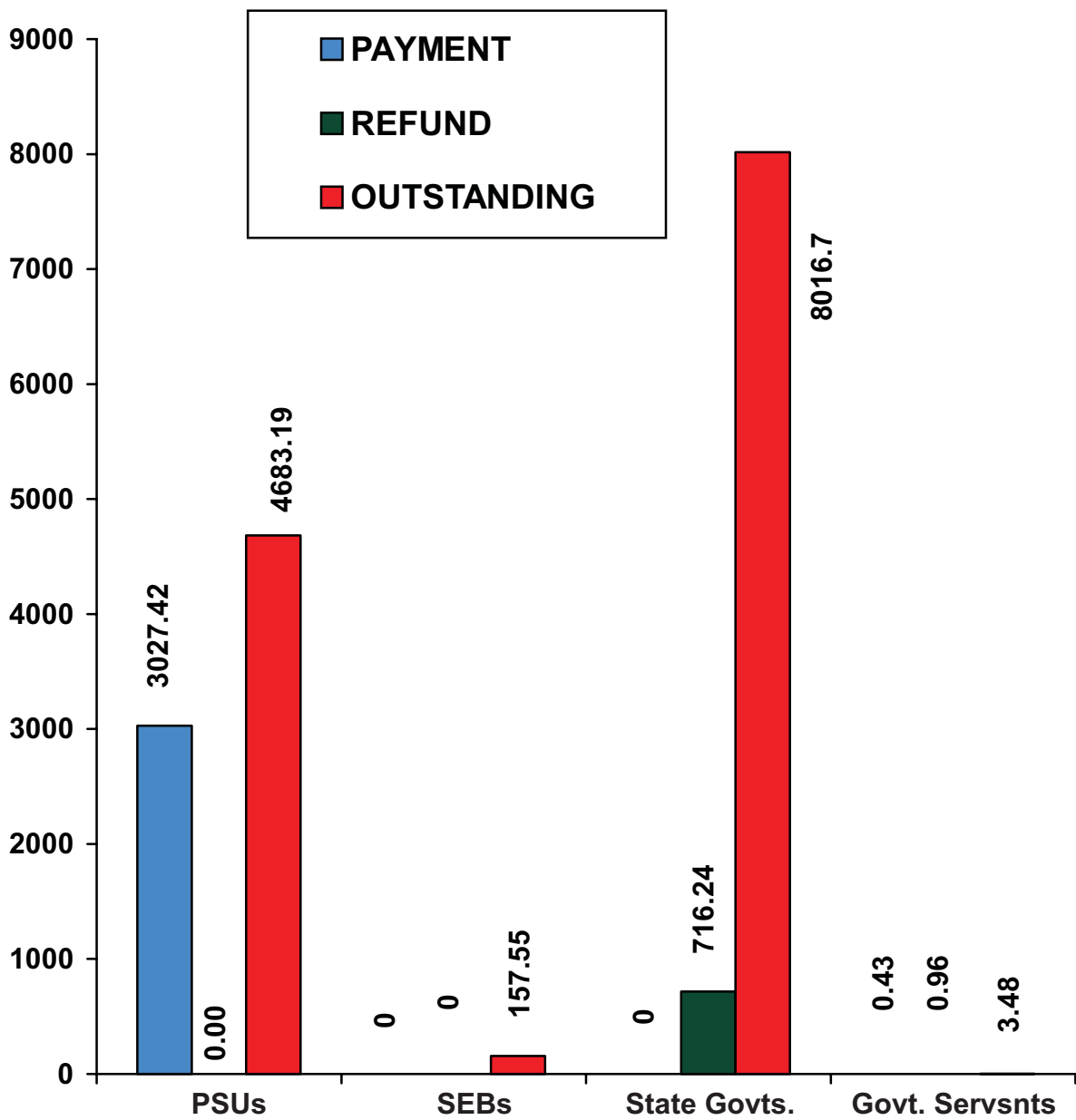
(In crores of ₹)

Particulars	Outstanding as on 31.3.2010	Loan paid during 2010- 2011	Loan refunded during 2010- 2011	Outstanding as on 31.3.2011
A. Loans to Public Sector Undertakings	1655.77	3027.42	----	4683.19
B. Loans to State Electricity Boards	157.55	0.00	0.00	157.55
C. Loans to State Govts.	8732.94	0.00	716.24	8016.70
D. Loans to Govt. Servants	4.01	0.43	0.96	3.48
Total	10550.27	3027.85	717.20	12860.92

SOURCE: FINANCE ACCOUNTS & STATEMENTS 15, 3-A (LOAN SECTION)

LOAN PAYMENT, REPAYMENT & OUTSTANDING (2010-2011)

(In Crore of ₹)



MINISTRY OF POWER
LOAN, PAYMENT, REPAYMENTS & OUTSTANDING
AS ON 31.03.2011

A. LOANS TO PSUs & STATUTORY BODIES/COMPANIES

(In crores of ₹)

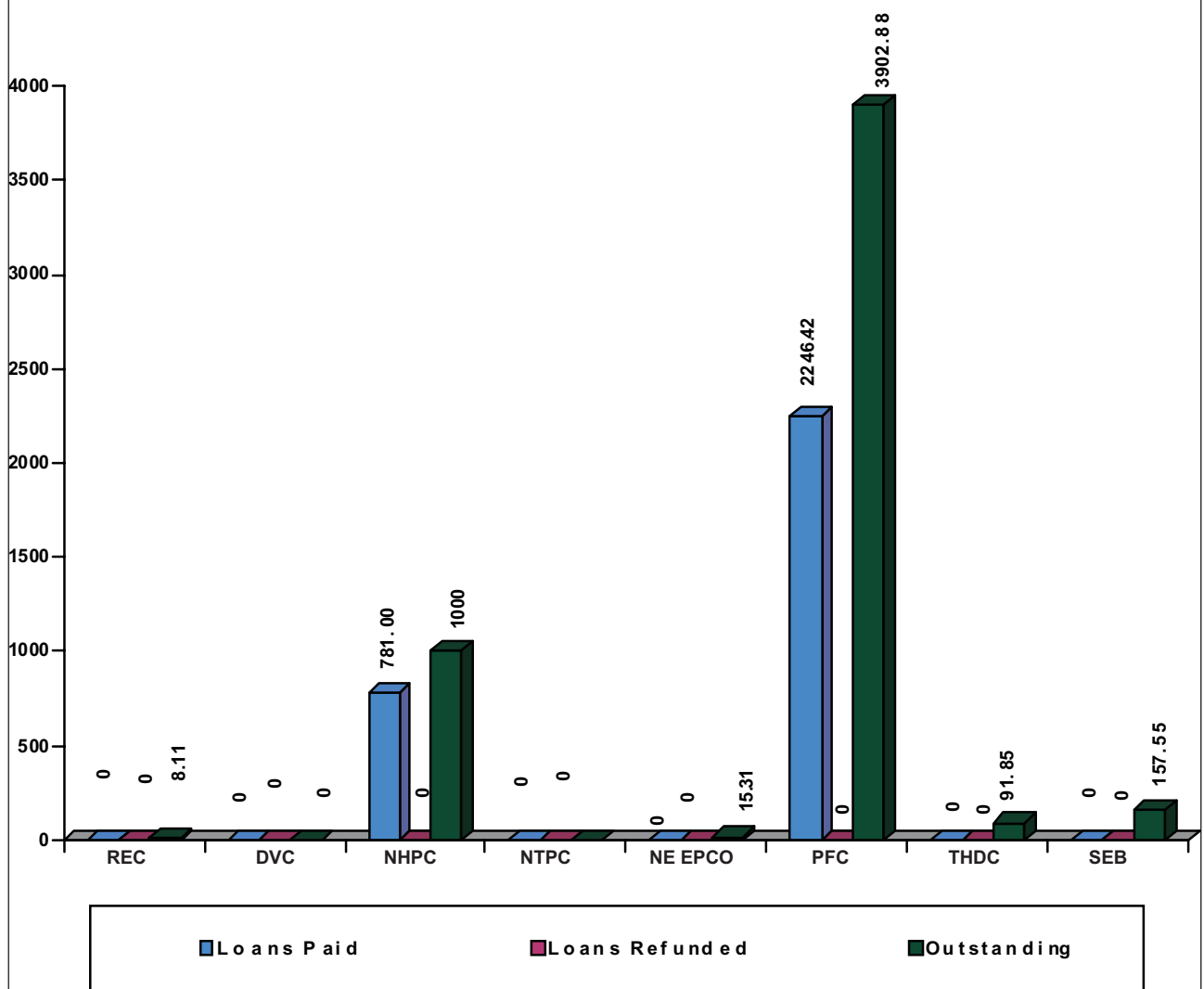
S.N o.	Particulars	Outstanding as on 31.3.2010	Loan paid during 2010-11	Loans refunded during 2010-2011	Balance as on 31-3-2011
1	Rural Electrification Corp.	8.11	—	—	8.11
2.	Damodar Valley Corp.	—	—	—	---
3.	National Hydro-electric Power Corpn	-334.96 219.00	781.00	---	-334.96 1000.00
4.	National Thermal Power Corpn	----	---	---	---
5.	North Eastern Electric Corpn.	15.31	—	----	15.31
6	Power Grid Corpn. Of IndiaLtd.	---	--	--	---
7	Power Finance Corporation Ltd	1656.46	2246.42	—	3902.88
8	T.H.D.C.	91.85	---	—	91.85
	Total (A)	1655.77	3027.42	—	4683.19
B	State Electricity Boards	157.55	---	---	157.55
	Total (B)	157.55	---	—	157.55
	Total (A)+(B)	1813.32	3027.42	----	4840.74

Source: Finance Accounts & Statement No.3-A (Loan Section)

**MINISTRY OF POWER
LOANS, PAYMENTS, REPAYMENTS & OUTSTANDING
AS ON 31.03.2011**

LOANS TO PSUs & STATUTORY BODIES/COMPANIES

(In crores of ₹)



MINISTRY OF POWER
LOAN, PAYMENTS, REPAYMENTS & OUTSTANDING
AS ON 31.3.2011

C. LOANS TO STATE GOVERNMENTS

(₹.in lakhs)

S.No.	Particulars	Outstanding as on 31.3.2010	Loan paid during 2010-2011	Loan repaid during 2010-2011	Outstanding as on 31.3.2011
1.	Andhra Pradesh	15.16	----	9.16	6.00
2.	Assam	426.19	----	0	426.19
3.	Bihar	2.45	—	1.06	1.39
4.	Haryana	40.18	—	14.18	26.00
5.	Himachal Pradesh	157.16	—	87.95	69.21
6.	Jammu & Kashmir	13.62	—	0	13.62
7.	Kerala	12.21	----	5.27	6.94
8.	Karnataka	157.11	—	37.57	119.54
9.	M.P	78.2	----	39.71	38.49
10.	Maharashtra	101.04	—	34	67.04
11.	Manipur	76.24	—	2.17	74.07
12.	Nagaland	194.84	—	3.5	191.34
13.	Orissa	6501.79	—	398.73	6103.06
14.	Punjab	0	—	0	0
15.	Rajasthan	13.67	----	6.56	7.11
16.	Tamil Nadu	3.08	—	1.52	1.56
17.	West Bengal	575.30	—	0	575.30
18.	Gujarat	16.18	—	8.00	8.18
19.	Meghalaya	-123.64	—	51.36	-175.00
20.	Goa	319.34	—	10.86	308.48
21.	Mizoram	64.75	—	0	64.75
22.	Arunachal Pradesh	37.00	—	0	37.00
23.	Tripura	51.07	—	4.64	46.43
	TOTAL	8732.94	----	716.24	8016.70

Source: Finance Accounts & Statement No.15 (Loan Section)

**SECTORAL ANALYSIS OF LOANS GIVEN TO VARIOUS PSUs UNDER MINISTRY
OF POWER M.H.6801**

(In Crore of ₹.)

Particulars/ Sector	2006-07	2007-08	2008-09	2009-10	2010-11
HYDEL	---	---	34.00	185.00	781.00
THERMAL	---	---	---	---	---
DIESEL/GAS	---	---	---	---	---
REC	---	---	---	---	---
T&D	---	---	---	---	---
GENERAL	---	---	325.00	1331.46	2246.42
TOTAL	---	---	359.00	1516.46	3027.42

HYDEL : NHPC, SJVN (formally NJPC), THDC & SARDAR SAROVAR

THERMAL : DVC, NTPC & BTPS/BTPP

DIESEL/GAS : NEEPCO

T&D : PGCIL, LDS & HVDC

GENERAL : PFC, PSTI, HLTC AND OTHERS

Chapter 7

Internal Audit

The Internal Audit Wing of Ministry of Power ensures adoption of sound procedure, regularities and financial propriety in transactions of accounts.

(A) Organisation

Internal Audit Wing is supervised by Dy. Controller of Accounts and headed by the Controller of Accounts.

(B) Duties entrusted to the Internal Audit Wing as per the 5 years audit perspective plan for the period 2009-14:

1. Compliance audit of 28 DDOs/PAOs of Ministry of Power.
2. Scheme audit of 15 districts in respect of Rajiv Gandhi Grameen Vidyutikaran Yojana (RGGVY).
3. Scheme audit of 15 project in respect of Restructured-Accelerated Power Development and Reforms Programme (R-APDRP).
4. Special audit of subsidy disbursed under Accelerated Generation and Supply Programme (AG&SP) Scheme by Ministry of Power to Public Sector Undertakings viz. Power Finance Corporation (PFC) & Rural Electrification Corporation (REC).
5. Coordination and monitoring of inspection reports issued by Comptroller & Auditor General in respect of Ministry of Power.
6. Annual Review of the activities of the Internal Audit Wing based on the Internal Audit Report of various organizations of the Ministry of Power.
7. Audit of Grantee Institutions under Ministry of Power viz. Bureau of Energy Efficiency, National Power Training Institute, Central Electricity Regulatory Commission, Forum of Regulators, Central Power Research Institute, Joint Electricity Regulatory Commission (UT & Chandigarh), Joint Electricity Regulatory Commission (Mizoram & Goa).

(C) Status of Audit Paras as on 31.3.2011 is as under:-

Opening balance as on 1.4.2010	No. of Paras added during 2010-11	No. of Paras settled during 2010-11	Closing balance as on 31.3.2011
378	142	195	325

(D) Important audit observations which resulted to refund of more than Rs.10 crores :

- (I) Finding of surplus net excess NPV of subsidy with Power Finance Corporation (PFC) amounting to Rs. 393.87 Crore as on 31.3.2010 which resulted in part refund of Rs. 150 Crore by PFC to Ministry of Power, Govt. of India.
- (ii) Finding of surplus net excess NPV of subsidy with Rural Electrification Corporation (REC) amounting to Rs.45.1879 crore as on 30.6.2010 which resulted in part refund of Rs.24.384 crore by REC to Ministry of Power, Government of India.

(E) Important irregularities which involve amount of more than Rs. one crore:

- (i) Irregularities in the payment of contingent advances of Rs.15.66 crore to consultant (NTPC) for modernization of offices of CEA located in Delhi.
- (ii) Imprudent expenditure of Rs.9.2934 crore for up-gradation of information Technologies facilities in CEA.
- (iii) Flouting of all rules of GFRs in leasing of eight vehicles for five years well above market rates with value of contracts of approx. Rs.121.70 lakhs by CEA (Hq.).

Breakup of outstanding audit observations and inspection reports as on 31.03.2011

Internal Audit Observations

The Organization-wise break up of Outstanding Audit Observations and inspection Reports as on 31.3.2011 is as under.

S. No	Organization/ Office	No. of Inspection Reports	No. of Paras
1	Ministry of Power	2	32
2	Central Electricity Authority	27	215
3	Appellate Tribunal for Electricity	1	32
4	Controller of Accounts		
	(I) Pr.A. O (Admin)	1	7
	(II) Pr. A.O. (A/c)	1	7
	(III) PAO (CEA)	1	11
	(IV) PAO (Sect.)	1	12
	(V) PAO (BMCC)	1	3
	(VI) PAO (CEA) Bangalore	1	6
	Total	36	325

Statutory Audit Paras of MOP,PSUs etc

The position of pending Audit Paras as on 31.3.2011 is as under

PARAs	MOP	Unit	Audit	COPU/Monitoring Cell	Total
Commercial Paras	8	---	8	17	33
Civil Paras	1	—	1	3	5
Draft Paras	—	—	—	—	---
Total	9	---	9	20	38